

Installation Requirements for Two-Phase Distribution Boxes



Overview

Check for proper IP/NEMA ratings and material quality. Ensure safe placement: install in dry, accessible areas with good ventilation and at appropriate height (typically ~1. Practice good wiring: secure grounding, neat cable management, proper insulation, and correct wire gauge and. It takes the incoming power and safely distributes it to different circuits throughout your building. Whether in a home or an industrial facility, this box keeps your electrical setup organized, functional, and efficient. The National Electrical Code (NEC) requirements might seem like bureaucratic red tape, but they're more like the safety rails that keep everything running smoothly and prevent dangerous surprises. "Getting your distribution box installation right isn't just about passing inspection - it's about. The installation requirements and specifications of Distribution box involve many aspects, including site selection, fixing method, wiring specifications and safety protection. This article mainly talks about the first one. An electrical distribution box, also known as a power distribution box, panelboard, or consumer unit.

Installation Requirements for Two-Phase Distribution Boxes



The installation requirements and specifications of Distribution box involve many aspects, including site selection, fixing method, wiring specifications ...



Learn how to create installation media for installing or reinstalling Windows.



Find certified Ubiquiti installers near you to design, install, and support UniFi networking, WiFi, security, and access control solutions for homes and businesses.



Obtain all necessary building and zoning permits. Verify electrical inspection requirements for your jurisdiction. Meet with a Power Company representative to design your service. Review the ...



Home Services at The Home Depot has everything you need for your installation and repair needs. If you're remodeling your home or replacing older products, let us do it for you. Visit your local store, ...



In December of 2022, I completed installation of a solar system and battery backup for my home, and I would like to commend Clean Solar and their team of professionals for a job well done.



Get expert installation services from Mr. Handyman, including furniture assembly, TV mounting, and door installation. Contact us today for reliable, affordable solutions.



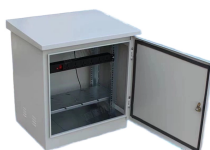
The installation requirements and specifications of Distribution box involve many aspects, including site selection, fixing method, wiring specifications and safety protection.



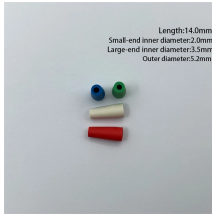
Requirements for service are subject to change without notice, including in-between publications. Please contact Avista prior to starting construction for latest requirements. This publication does not include ...



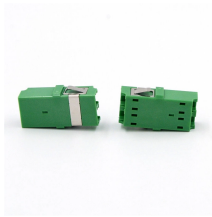
Sections 1926.402 through 1926.408 contain installation safety requirements for electrical equipment and installations used to provide electric power and light at the jobsite.



Installation cost estimators for home construction, home remodeling and home maintenance. Typical installation pricing estimates.



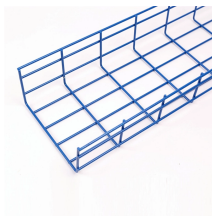
INSTALLATION meaning: 1 : the act or process of making a machine, a service, etc., ready to be used in a certain place the act of installing something; 2 : a ceremony in which someone is put in an official ...



The meaning of INSTALLATION is the act of installing : the state of being installed. How to use installation in a sentence.



This booklet (SP-1099) outlines NYSEG's minimum equipment specifications, and minimum installation requirements for a CUSTOMER constructed primary voltage (2400 Volts to 34500 Volts) distribution ...



The latest NEC updates prioritize adaptive solutions for modern energy demands. With homes now packing solar arrays, EV chargers, and smart-home systems, distribution boxes work harder than ...



Roof installation is available for customers that need help installing Starlink. Installers can help with permanent mounting on roofs or walls, cable routing, and more.



Complete your interior or exterior home project with our installation services, whether you're updating your kitchen with new cabinets or elevating the look of your yard with fencing installation. Learn more ...



This document shows the methods and requirements for installing PG& E-owned underground service conductors in commercial buildings and three-phase multi-residential buildings.



FOR POLES LARGER THAN APPEARING ON THIS TABLE SEE TRANSMISSION WOOD POLE REINFORCING STANDARDS FOR INSTALLATION REQUIREMENTS IN THE 69KV OVERHEAD ...



Learn how to install a distribution box safely and correctly. Covers wiring, placement, standards, and expert tips for a compliant setup.



Whether you are an electrical contractor or a construction brigade, knowing how to properly and safely install distribution boxes is the basis of ensuring the safe operation of the entire ...

Contact Us

For more information, pricing, or custom solutions, please contact us:

Website: <https://www.samastersbaseball.co.za>

Email: sales@samastersbaseball.co.za

Phone: +27 63 874 2095

Address: 15 Innovation Drive, Technopark, Stellenbosch, 7600, South Africa

This document is for informational purposes only. Specifications subject to change without notice.

