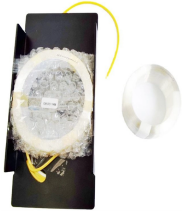


Install a separate distribution box



Install a separate distribution box



Proper installation of a distribution box requires careful planning and adherence to electrical codes. While major installations should always involve qualified electricians, understanding ...



First of all, you need to have a simple understanding of the definition of a distribution box, and make it clear which kind of distribution box you want to install. This is important to properly install it.



This article provides a detailed overview of the entire process of installing a distribution box, from pre-installation preparation to post-installation maintenance, and summarizes common ...



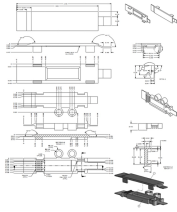
Installing a household distribution box requires careful attention to specifications and safety guidelines. Understanding these parameters is vital for ensuring the safety and efficiency of ...



Learn how to wire a distribution box step by step! This video shows real on-site footage of electrical installation, demonstrating safe and standardized wiring methods used by professionals.



The latest NEC updates prioritize adaptive solutions for modern energy demands. With homes now packing solar arrays, EV chargers, and smart-home systems, distribution boxes work harder than ...



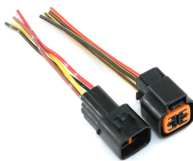
Learn how to install a distribution box safely and correctly. Covers wiring, placement, standards, and expert tips for a compliant setup.



Install a distribution box at 4.5 to 5.5 feet high for safety, accessibility, and compliance. This height ensures easy use and protection from hazards.



A mini sub panel, also known as a secondary load center, is an electrical distribution box installed downstream from the main service panel to manage power for a specific zone or remote ...



In this comprehensive guide, we'll cover everything you need to know about distribution box installation, from the basics to the step-by-step installation ...



Proper installation of a distribution box requires careful planning and adherence to electrical codes. While major installations should always involve qualified electricians, understanding ...



In this comprehensive guide, we'll cover everything you need to know about distribution box installation, from the basics to the step-by-step installation process, safety tips, and the benefits of getting it right ...

Contact Us

For more information, pricing, or custom solutions, please contact us:

Website: <https://www.samastersbaseball.co.za>

Email: sales@samastersbaseball.co.za

Phone: +27 63 874 2095

Address: 15 Innovation Drive, Technopark, Stellenbosch, 7600, South Africa

This document is for informational purposes only. Specifications subject to change without notice.

