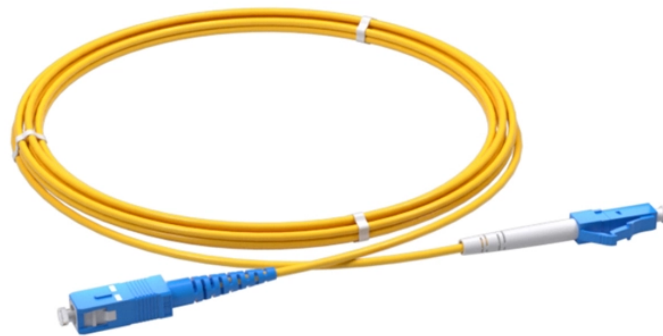


Inspection of 12-core multimode optical cable



Inspection of 12-core multimode optical cable



The OFI-BIPM/-BIPMe optical fiber identifier is an easy-to-use tool that determines if a fiber is live, the transmission direction, and the relative core power on standard and bend-insensitive single-mode ...



Fiber optic cable provides several advantages over traditional copper cabling, including faster data transfer rates, longer transmission distances, and immunity to electromagnetic interference. What is ...



Insertion loss is tested by connecting a test source through a mating reference cable (launch reference cable) to the cable plant under test and measuring the loss with a power meter attached to the cable ...



AFL's Multi-Fiber Switch enables efficient testing of 12-fiber MPO cables without breakout cables. Compatible with OTDR, OLTS, and Rogue platforms for automated testing.



You should document any defects you find. Optical Loss Testing You need to measure optical loss to confirm your fiber link meets performance requirements. Follow procedures like ...



When a fiber optic system is successfully tested and determined to meet the customer's specific requirements and relevant industry standards, the system performance and individual links can be ...



The passive fiber optic link may include the following components: 1) fiber optic cable, 2) fiber optic connectors, 3) fiber optic adapters, 4) fiber optic splices and 5) fiber optic "hardware" ...



Safety in fiber optic installations specifically includes avoiding exposure to light radiation carried in the fiber; disposal of fiber scraps produced in cable handling and termination; and safe handling of ...



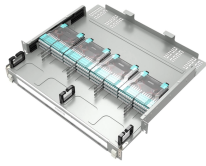
Quality Inspection for 12 Core Multimode Fiber Optic Cable - GYTA53 Stranded Loose Tube Cable with Aluminum Tape and Steel Tape - GL Technology



This document outlines the Panduit recommended procedures for visual inspection and cleaning of multimode and singlemode structured cabling system interconnect components (connectors and ...



After fiber optic cables are installed, spliced and terminated, they must be tested. For every fiber optic cable plant, you need to test for continuity and polarity, end-to ...



JDSU's precision, stainless-steel fiber inspection tips and adapters are carefully designed and engineered to produce consistent and accurate inspection. These inspection tips are interchangeable ...



Feedback (2) We follow our enterprise spirit of "Quality, Efficiency, Innovation and Integrity". We aim to create much more worth for our buyers with our abundant resources, highly developed machinery, ...



Inspection and cleaning are critical steps that must be performed before making any fiber connection.



MPO Visual Cable Verifier Kit, 4, 8, 12 & 24 Fiber KI-TK824 MPO/MTP polarity, continuity & end-face checker 4, 8, 12, 24 fiber MPO Verifier kit with color-pattern source & scope, 4, 8, 12 & 24 fiber SM ...

Contact Us

For more information, pricing, or custom solutions, please contact us:

Website: <https://www.samastersbaseball.co.za>

Email: sales@samastersbaseball.co.za

Phone: +27 63 874 2095

Address: 15 Innovation Drive, Technopark, Stellenbosch, 7600, South Africa

This document is for informational purposes only. Specifications subject to change without notice.

