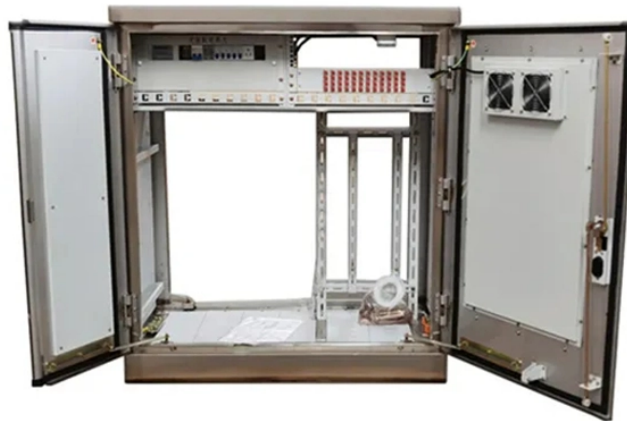


Importing Data from Energy Data Center



Overview

The project initially began as a tool for importing historical data for Toon (Eneco) into Home Assistant. In early 2024, the project scope expanded, enabling the import of data from various energy providers.



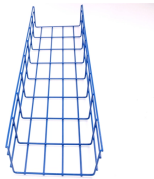
Importing Data from Energy Data Center



With the rapid expansion of cloud computing and large-scale artificial intelligence models, building accurate and transparent energy-use statistics for data centers has become a ...



With significant changes observed in the data center sector in recent years, owing to the rapid emergence of AI hardware, total data center energy use after 2023 is presented as a range to reflect ...



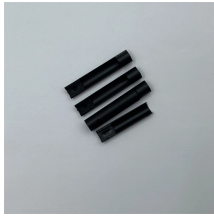
The U.S. Department of Energy's (DOE's) open data initiatives are managed by the Office of the Chief Information Officer (OCIO) who works collaboratively across Headquarters Offices and Programs, ...



To that end, here's a look at the various ways to track data center energy consumption and why multiple types of energy measurements are critical for optimizing sustainability.



As the world becomes increasingly digitalised, data centres and data transmission networks are emerging as an important source of energy demand.



With energy as a major operating expense for data centers, a robust data foundation enables optimization of existing operations and informed decisions about future growth.



This repository includes the energy consumption data set of a Data Server that is running in the facilities of the Information Technology Center (CTI) of the Escuela Superior Politécnica del ...



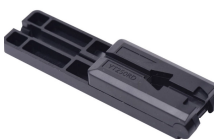
This project achieved two objectives: 1) it developed pre-commercial server, data center, and data center cluster energy efficiency technologies and strategies, and 2) it provided easily accessible ...



A 2021 report by the U.S. Energy Information Administration on a pilot study of energy use in data centers surveyed 50 facilities and received 9 responses. Private firms maintain data sets ...



In this guide, I'll walk through the real, technical, on-the-floor integration of energy dashboards in high-density environments, using real product examples from CAE Lighting and ...



Making it easier to import data from various energy providers. Please share scripts or how-to guides if you have built an integration with a new energy provider.



For Home Assistant users that would like to import historical energy data from Toon (Eneco - Dutch) or other energy providers into Home Assistant I created a SQL script that does that ...



The latest version of the script is independent from the energy provider and makes it possible to import historical exported energy data into Home Assistant. It adds the statistics data that is missing in ...

Contact Us

For more information, pricing, or custom solutions, please contact us:

Website: <https://www.samastersbaseball.co.za>

Email: sales@samastersbaseball.co.za

Phone: +27 63 874 2095

Address: 15 Innovation Drive, Technopark, Stellenbosch, 7600, South Africa

This document is for informational purposes only. Specifications subject to change without notice.

