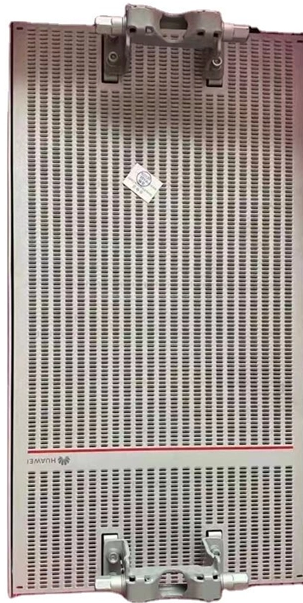


# Huawei optical module optical power threshold



## Overview

Check whether the receive power of the optical module is within a usable range. You can set optical power alarm thresholds using commands. An optical module has default optical power alarm thresholds, which are fixed and. ENTITYTRAP/3/OPTMAYINVALID: OID The optical power exceeds the upper warning threshold or falls below the lower warning threshold. (Index=, EntityPhysicalIndex=, PhysicalName=" ", EntityTrapFaultID=, EntityTrapReasonDescr=" ") The receive power of an. Output bandwidth utilization threshold: 90. 00% Input bandwidth utilization: 0% Output bandwidth utilization: 0% 2. Related Information Video Identify a Huawei-Certified Optical Module Run the display transceiver [ interface interface-type interface-number | slot slot-id ] [ verbose ]. If an optical module on an interface is faulty, you can run the display commands to view information about the optical module.

## Huawei optical module optical power threshold



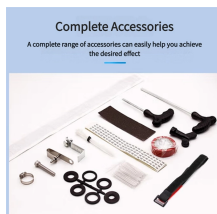
If so, rectify the peer optical module fault first. Check whether the peer optical module and the local optical module are of the same type. If not, replace the local optical module with a new one ...



The system automatically obtains the vendor-defined power threshold of an optical module and compares it with the actual power. If the actual power exceeds the vendor-defined threshold, an ...



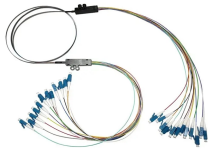
Upper and lower alarm thresholds are set for the transmit power of the optical module on the interface. This document describes the principles and configurations of the Device Management features, and ...



When the receive or transmit power of an optical module exceeds the upper threshold or falls below the lower threshold, the optical module may fail to work properly.



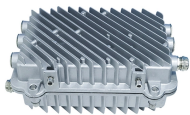
When the transmit/receive power of the optical ports is too high, optical modules on the ports may be damaged. In this case, connect an attenuator to the optical modules.



Although these optical modules have the same wavelength, optical power alarms occur because different vendors design different optical power indicators for these optical modules.



The following uses the Moduletek SFP-10G-LR module connected to a Huawei S6700 switch as an example to introduce how to read information of the connected optical module on a Huawei switch.



Upper and lower alarm thresholds are set for the transmit and receive power of the optical module on the interface. When the transmit or receive power of an optical module exceeds the upper alarm ...



You can set optical power alarm so that the device generates alarms if the transmit or receive power of an optical module exceeds a threshold. An alarm may indicate that the optical module is faulty.



If the connected optical modules have the same wavelength and provide short-distance transmission but alarms indicating low or high optical power occur, the two optical modules may be from different ...

## Contact Us

For more information, pricing, or custom solutions, please contact us:

Website: <https://www.samastersbaseball.co.za>

Email: [sales@samastersbaseball.co.za](mailto:sales@samastersbaseball.co.za)

Phone: +27 63 874 2095

Address: 15 Innovation Drive, Technopark, Stellenbosch, 7600, South Africa

This document is for informational purposes only. Specifications subject to change without notice.

