

# How to use the light-sensing recording module



## Overview

In this comprehensive guide you will learn exactly how an LDR works, how to wire it with an Arduino, how to write the firmware, how to calibrate it for your environment, and how to extend the project into something more sophisticated. The LDR light sensor is very affordable, but it requires a resistor for wiring, which can make the setup more complex. Have you ever wondered how. I built a small light-sensing system using an LDR, an LED, and a buzzer to detect darkness and trigger an alert. The LDR's analog output is read through the Arduino's ADC, and when the light level drops below a set threshold, the system automatically switches on the LED and activates the buzzer. This module combines a photoresistor (LDR) with an LM393 comparator, providing both analog light level output and a digital ON/OFF output with an adjustable threshold.

## How to use the light-sensing recording module



Behind both of these tricks is a simple but powerful component: the light sensor. In this tutorial, we'll explore what light sensors are, how they work, and then we'll build a project where an ...



Learn: how light sensor works, how to connect light sensor to Arduino, how to code for light sensor, how to program Arduino step by step. The detail instruction, code, wiring diagram, video tutorial, line-by ...



This is a quickstart guide to the Arduino light sensor circuit. You'll learn how to connect the circuit on a breadboard and the needed code.



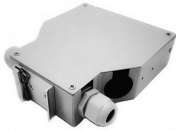
It covers the working principles, schematic diagrams, pins, performance parameters, etc. of light sensors also includes a tutorial section explaining how to use light sensors with Arduino.



I built a small light-sensing system using an LDR, an LED, and a buzzer to detect darkness and trigger an alert. The LDR's analog output is read through the Arduino's ADC, and when ...



You will learn how the module works internally, how to wire it correctly, how to tune the sensitivity, and how to use it reliably with Arduino. This tutorial is a ...



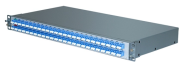
In this tutorial, you'll learn how to use an LDR, a basic yet powerful component, to create your own light sensing projects. An LDR is a special resistor that changes its resistance based on the amount of ...



You will learn how the module works internally, how to wire it correctly, how to tune the sensitivity, and how to use it reliably with Arduino. This tutorial is a comprehensive, practical guide to the LM393 ...



In today's tutorial, I'll guide you through the setup, wiring, and coding process for utilizing a Light Dependent Resistor (LDR) with an Arduino board.



In this comprehensive guide you will learn exactly how an LDR works, how to wire it with an Arduino, how to write the firmware, how to calibrate it for your environment, and how to extend the ...



The 4-Pin LDR Module is a light-sensitive sensor that detects ambient light intensity using a photoresistor. This module provides both digital and analog outputs, making it ideal for automatic ...

## Contact Us

For more information, pricing, or custom solutions, please contact us:

Website: <https://www.samastersbaseball.co.za>

Email: [sales@samastersbaseball.co.za](mailto:sales@samastersbaseball.co.za)

Phone: +27 63 874 2095

Address: 15 Innovation Drive, Technopark, Stellenbosch, 7600, South Africa

This document is for informational purposes only. Specifications subject to change without notice.

