

# How to use a blank network server rack



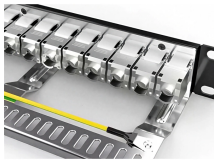
## Overview

This guide walks you through the full process, from choosing the right rack to installing hardware, power, cooling, and network components. Your rack selection determines how much equipment you can mount today and how easily you can expand later. Blanking panels are flat filler plates (typically metal or plastic) used to cover empty rack units in server cabinets. While simple in concept, they play a critical role in airflow management, preventing hot and cold air from mixing and thereby keeping servers within safe temperature ranges. If any of the vertical space in a server cabinet remains open, the gaps. Setting up a home server rack creates a cleaner, safer, and easier-to-manage environment for your servers and networking gear. This item is a deferred, subscription, or recurring purchase. Learn why IT Pros trust StarTech. com for performance connectivity accessories.

## How to use a blank network server rack



A well-designed rack improves airflow, cable routing, and serviceability while keeping your equipment secure. This guide walks you through the full process, from choosing the right rack to ...



4 mm thick blank plate for 1U 10" mini server rack or network rack. Standard dimensions 254mm wide, 44.45mm high. Two hole heights included, standard 6.5mm for a tight fit and 7mm to ...



Learn why ASHRAE guidelines recommend blanking panels in every server rack. See how proper panel placement supports thermal compliance and reduces cooling overhead.



Learn how to rack a server with this detailed step-by-step guide. Includes setup tips, cable management, cooling, and safety practices.



Blanking Panels, also called "filler panels", are used to control the airflow inside of server racks. Without blanking panels, the hot exhaust air from the rear of the servers will recirculate through empty spaces ...



**PROTECT EQUIPMENT:** This blanking panel helps to protect valuable rackmount server equipment by creating space between installed devices, promoting airflow and passive cooling



Blank rack panels are often used as a way to fill in any gaps and conceal empty rack spaces in a rack or enclosure. Order blanking panels for server racks now!



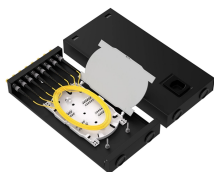
A 24-port rack-mount blank patch panel with front labeling and cable management support provides efficient, scalable, and professional network organization in a 1U rack space.



Blanking panels (also known as filler panels or rack spacer blanks) are installed in server racks to maintain proper airflow. Using a rack without blanking panels results in improper cooling which can ...



Blanking Panels, also called "filler panels", are used to control the ...



About this item Panel Type: Blank Panel Material: Iron Color: Black 10" Rack Blank Panel - 2U Applies to: 10-inch rack-mount installation for T0/T1/T2 server cabinet Length: 250mm/9.84", Width: ...



About this item Panel Type: Blank Panel Material:  
Iron Color: Black 10" Rack ...

## Contact Us

For more information, pricing, or custom solutions, please contact us:

Website: <https://www.samastersbaseball.co.za>

Email: [sales@samastersbaseball.co.za](mailto:sales@samastersbaseball.co.za)

Phone: +27 63 874 2095

Address: 15 Innovation Drive, Technopark, Stellenbosch, 7600, South Africa

This document is for informational purposes only. Specifications subject to change without notice.

