

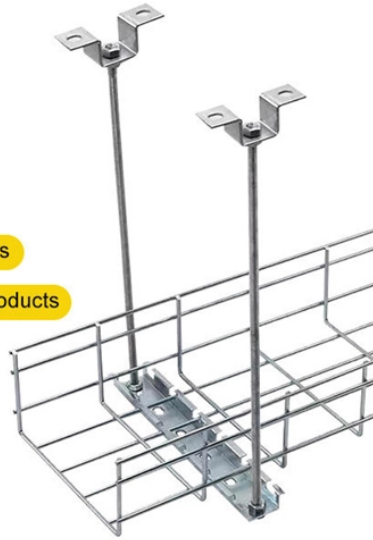
How to select and configure the core switch

STAINLESS STEEL WIRE MESH

Long-lasting and durable

Comprehensive specifications

Customized non-standard products



Overview

In this article, we will provide an overview of the core switch, its significance, and offer guidance on how to choose the right core switch for your organization's specific needs. Just like riding a bicycle, nobody's born knowing how to setup a network switch. The part of the network that directly connects to user devices is referred to as the access layer. An IOS is a Cisco proprietary operating system. It includes thousands of commands for various tasks.



How to select and configure the core switch



A core switch is not merely a type of switch but rather denotes the switch that operates at the core layer (the network's backbone). Positioned at the top of the three-layer network architecture ...



Follow these simple best practices to set up a new network switch. Just like riding a bicycle, nobody's born knowing how to setup a network switch. And this process is a little more advanced than, say, ...



In medium to large networks, core switches are key devices to ensure efficient, stable and secure network operation. Choosing the right core switch not only improves network ...



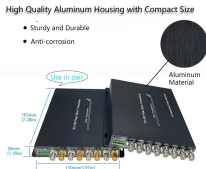
This tutorial explains basic switch configuration commands in detail with examples.



In this article, we will provide an overview of the core switch, its significance, and offer guidance on how to choose the right core switch for your organization's specific needs.



Configuring a Cisco switch properly means your network can make connections efficiently. In this step-by-step guide, we walk you through configuring Cisco switches and look at some FAQs.



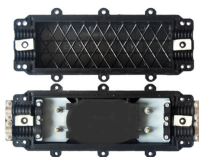
In this video we will learn how to configure cisco core switch active active using HSRP step by step.



Unlike other lower class switch vendors (which are plug-and-play), the Cisco switch needs some initial basic configuration in order to enable management, security and some other important features.



By carefully selecting, configuring, and managing your core switch, you can ensure optimal performance, scalability, and security for your network. Frequently Asked Questions (FAQs)



Generally speaking, core switches are Layer 3 switches, which can support various network protocols such as routing protocol/ACL/load balancing and have rich functions. The following ...

Contact Us

For more information, pricing, or custom solutions, please contact us:

Website: <https://www.samastersbaseball.co.za>

Email: sales@samastersbaseball.co.za

Phone: +27 63 874 2095

Address: 15 Innovation Drive, Technopark, Stellenbosch, 7600, South Africa

This document is for informational purposes only. Specifications subject to change without notice.

