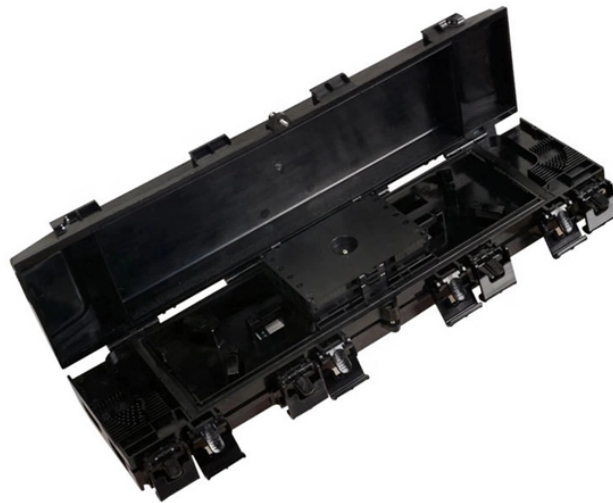


How to modify the optical module SN



Overview

In this article, we will focus on teaching you how to troubleshoot and solve the common three categories of optical module failure. All views 1: Monitoring level You can use this command to check the attributes of an EPON interface, including the laser working mode, signal status, logical link identifier (LLID), encryption function status (enabled or disabled), encryption mode. The EDGE PB-SFP-XFP-QSFP-QSFP-DD programming device is a tool designed for reading and writing internal memory on transceivers such as SFP, XFP, QSFP, and QSFP-DD. It is compatible with most transceivers, supporting speeds from 155 Mbps to 400 Gbps. The device offers a wide range of applications. This module describes the command line interface (CLI) commands for configuring Optics on the Cisco 8000 Series Routers. com, our Cisco-certified engineers help enterprises monitor, test, and manage optical transceivers.

How to modify the optical module SN



This module describes the command line interface (CLI) commands for configuring Optics on the Cisco 8000 Series Routers. Not all commands are supported on both coherent and non ...



SN Connectors enable high-density duplex fiber connections for next-gen networks, requiring specialized fixturing/tooling for precise assembly. Learn more.



Learn Cisco commands like show inventory and show interface transceiver detail to monitor SFP modules, DDM metrics, and compatibility.



This document provides a CLI configuration guide for FiberHome Optical Line Terminal equipment.



Open up the program and click "Scan & Connect" - this will enable your computer port: In the software, you can see that there are 4 form factors to choose from: Choose the interface based ...



The central office OLT only needs to register the GPON MAC SFP ONU optical module in the way of configuring a common optical modem, and then complete the access switching of the equipment ...



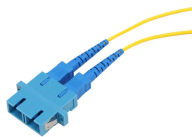
The SN is ceramic-based fiber optic connector so compact and flexible that it can be utilized either as a Base-8 trunk solution, a Base-2 patching interface or as a Base-8 connection to next generation ...



The second step is to check whether the optical power of the optical module is normal. Check the current measured value of the digital diagnostic parameters of the optical module inserted ...



Using the optical-module threshold bias command, you can set the lower and upper alarm thresholds of the bias current for the optical module on a passive optical network (PON) interface.



Additionally, identifying module information helps detect coding compatibility between the module and the switch. The following introduces the specific operations to view the working status ...

Contact Us

For more information, pricing, or custom solutions, please contact us:

Website: <https://www.samastersbaseball.co.za>

Email: sales@samastersbaseball.co.za

Phone: +27 63 874 2095

Address: 15 Innovation Drive, Technopark, Stellenbosch, 7600, South Africa

This document is for informational purposes only. Specifications subject to change without notice.

