

How to lay cables after they exit the cable tray



Overview

This guide covers the critical steps, from selecting the right electrical cable tray and performing accurate cable fill calculations to managing a safe cable pull through and ensuring all bonding and grounding requirements are met. The two most common methods to. But before you lay the first tray or clamp down a single cable, you need a solid plan. This guide breaks down the process step by step. All the electrical installation work will be in accordance with the project electrical specifications. This is why proper planning and execution are. Installation of Cable in Cable Trays involves precise routing on support systems, NEC/IEC compliance, grounding, ampacity derating, bend radius control, segregation of services, fire safety, labeling, and reliable cable management for industrial and commercial facilities. We recognize the need for a complete cable tray reference source for electrical engineers and designers.

How to lay cables after they exit the cable tray



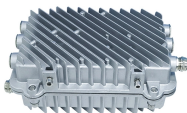
Cable tray layout must take into consideration the design limits of the cable. To minimize damage and verify integrity after installation, follow the practices outlined in cable handling and testing procedures ...



Learn the best practices for installing cables in trays. This guide covers essential steps, technical requirements, and key details for efficient cable tray installation.



Mastering cable tray installation is crucial for creating a safe, organised, and efficient cable management system. By following this step-by-step guide, you can ensure a seamless setup that ...



The two most common methods to transition from a cable tray to the equipment are: Cables or conductors leaving the cable tray and entering the equipment through a raceway with a bushing on ...



This guide outlines key procedures and technical considerations, covering pre-installation checks, installation in various environments, cable fixing and spacing, joint and terminal production, and ...



Instead of large conduits, cable channel may be used very effectively to support cable drops from the cable tray run to the equipment or device being serviced and is ideal for cable tray runs involving a ...



This publication is intended as a practical guide for the proper and safe* installation of cable ladder systems, cable tray systems, channel support systems and associated supports.



Learn everything about cable tray installation with our complete guide. Discover types, steps, and safety tips for efficient electrical cable management.



This guide covers the critical steps, from selecting the right electrical cable tray and performing accurate cable fill calculations to managing a safe cable pull through and ensuring all bonding and grounding ...



This procedure covers the method for all the cable pulling, electrical connections and terminations for cables running on cable ladders and cable trays. Electrical method also covers all associated cables ...

Contact Us

For more information, pricing, or custom solutions, please contact us:

Website: <https://www.samastersbaseball.co.za>

Email: sales@samastersbaseball.co.za

Phone: +27 63 874 2095

Address: 15 Innovation Drive, Technopark, Stellenbosch, 7600, South Africa

This document is for informational purposes only. Specifications subject to change without notice.

