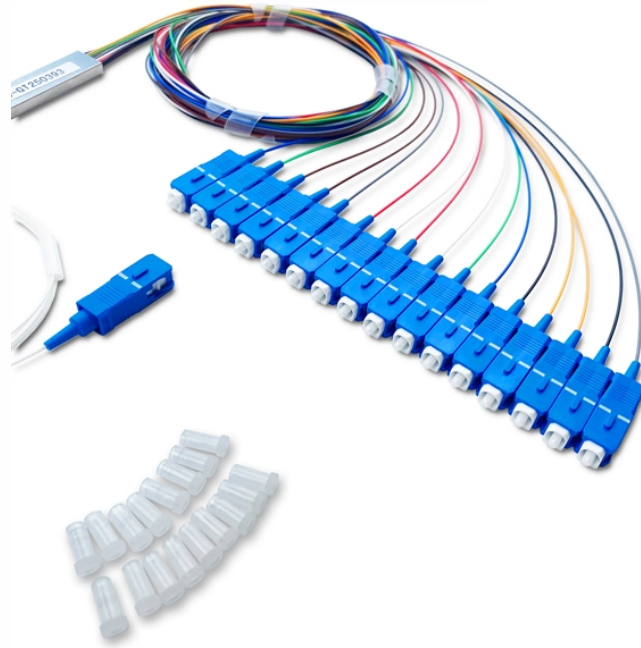


How to install a distribution box for construction power supply



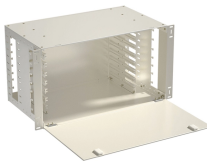
Overview

This guide offers an in-depth exploration of installing electrical distribution boards, highlighting essential steps, safety measures, and the integration of business intelligence tools to optimize your work. An electrical distribution box, also known as a power distribution box, panelboard, or consumer unit, is the core of an electrical system. Choose the right box based on environment (indoor/outdoor), load capacity, and durability. Check for proper IP/NEMA ratings and material quality. Ensure safe placement: install in. Whether it is residential buildings, commercial facilities or industrial sites, the correct and safe installation of distribution boxes is crucial to ensure stable power supply, prevent electrical hazards such as short circuits and fires, and comply with relevant safety standards. Material preparation: Prepare the required circuit breakers, wires, wiring ties and other materials, and ensure that they meet the design drawings and installation requirements. Location determination:.

How to install a distribution box for construction power supply



Box installation: Make sure that Distribution box has been correctly installed and fixed. Material preparation: Prepare the required circuit breakers, wires, wiring ties and other materials, and ...



Learn how to install a distribution box safely and correctly. Covers wiring, placement, standards, and expert tips for a compliant setup.



If you build or remodel homes for a living you've definitely encountered times when the crews didn't have enough power. This is especially true when you condition your houses during ...



Explore a comprehensive guide on installing electrical distribution boards in building construction with safety and BI insights.



Here are some of the best ways to keep your temporary jobsite power setup compliant, safe, and smart. The NEC governs electrical installations in the U.S., and Article 590 specifically ...



This article provides a detailed overview of the entire process of installing a distribution box, from pre-installation preparation to post-installation ...



In this video, we'll walk you through the step-by-step process of installing a distribution board (also known as a breaker panel) safely and efficiently.



METHOD STATEMENT FOR Electric panel and distribution box installation and termination - Free download as PDF File (.pdf), Text File (.txt) or read online for free. This document provides a method ...



Securely manage job site power. Build a compliant temporary distribution box, detailing component sizing, critical grounding, and wiring integrity.



Before starting the installation, finding a proper place for putting the distribution box is crucial, because it largely decides the safety and convenience of maintenance. Let's see what factors ...



This article provides a detailed overview of the entire process of installing a distribution box, from pre-installation preparation to post-installation maintenance, and summarizes common ...

Contact Us

For more information, pricing, or custom solutions, please contact us:

Website: <https://www.samastersbaseball.co.za>

Email: sales@samastersbaseball.co.za

Phone: +27 63 874 2095

Address: 15 Innovation Drive, Technopark, Stellenbosch, 7600, South Africa

This document is for informational purposes only. Specifications subject to change without notice.

