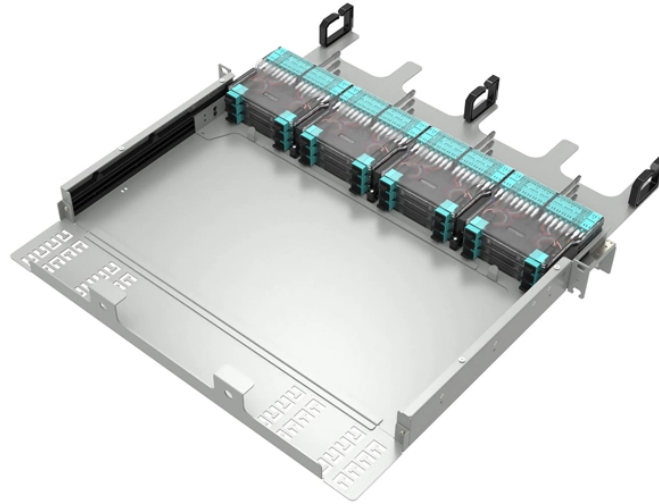


How to install a PoE power supply switch



How to install a PoE power supply switch



In conclusion, installing a PoE switch doesn't have to be complicated. Follow these five easy steps to install your PoE switch and ensure that your network is running smoothly.



The 10/100 Mbps RJ45 ports on the switch support the Power over Ethernet (PoE*) function, which can automatically detect and supply power to those powered devices (PDs*) complying with IEEE ...



Learn how to wire a PoE switch with a comprehensive diagram, helping you set up Power over Ethernet connectivity for your network devices.



Before powering your switch, make sure that:

- The operating power supply is compliant with rated input standard.
- Port cables and grounding cables are correctly connected.



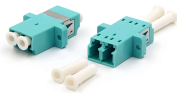
Start by disconnecting the device from the highest numbered port. Make sure that the Ethernet cables are plugged in correctly. For each powered device (PD) that is connected to the switch, the ...



Start by disconnecting the device from the highest-numbered port. Make sure that the Ethernet cables are plugged in correctly. For each powered device (PD) that is connected to the switch, the ...



ABOUT THIS VIDEO Learn *how to install PoE switches step-by-step* in this complete guide designed for beginners and professionals.



Start by disconnecting the device from the highest-numbered port. Make sure that the Ethernet cables are plugged in correctly. For each powered device (PD) that is connected to ...



Step 1 Provide power to the switch, if required. For a stand-alone switch, this simply means plugging in the power supply. For rack-mounted switches, this means using a slot that has power supplied to it. ...



A guide to how PoE works, how to select compatible equipment, and what you need to be aware of and test for when installing or troubleshooting PoE.



In this blog, we will guide you through the key steps to ensure a successful PoE switch installation and usage. What is a PoE Switch?

Contact Us

For more information, pricing, or custom solutions, please contact us:

Website: <https://www.samastersbaseball.co.za>

Email: sales@samastersbaseball.co.za

Phone: +27 63 874 2095

Address: 15 Innovation Drive, Technopark, Stellenbosch, 7600, South Africa

This document is for informational purposes only. Specifications subject to change without notice.

