

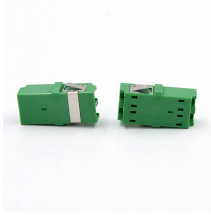
## How to inspect the distribution box after installation



### Overview

All LV switchboards should be completely cleaned, vacuumed, and given a thorough visual check on the inside and out. Verify that any installed electronic surge protection is still functional. Be sure to check the rating as well as the continuity of the fuse in the control circuit. When devices in your new box don't work, you start by testing the circuit. You will want a voltage tester (doesn't need to be a voltmeter) for this job. Multiple circuit breakers or fuses safeguard each circuit against over-loads, short-circuits, & other types of electrical failures. Ensure that all labels and warning signs are legible. This inspection aims to ensure the electrical systems are safe, correct. Main electrical panel inspection procedures & defects: This article summarizes inspection of the building electrical panel, main panel, or electrical distribution and sub panels.

## How to inspect the distribution box after installation



Initial verification done throughout installation process and at final commissioning, e.g. cables are tested (i.e. Insulation Resistance and Continuity) after 1st fix before appliances are connected. Other tests ...



This article series discusses procedures for safe and effective visual inspection of residential electrical systems including electrical panels and other components, when the inspection is conducted by ...



Your distribution box, the electrical system's core in your home, efficiently distributes power to various circuits. Regular maintenance is vital to ensure its safety, prevent electrical issues, ...



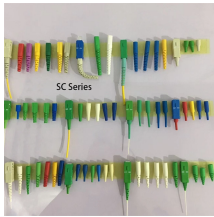
If you just installed your own new electrical box, and things aren't working properly, it's not fun. The good news is that most issues are easy to troubleshoot, especially if you follow the steps ...



The document provides a 16 item checklist for inspecting a main ...



During the construction and installation process, the methods to solve and prevent the failure of the distribution box include: Quality inspection: Make sure the distribution box and its components meet ...



Test the grounding system for continuity and resistance. Measure voltage levels at various points in the box. Perform insulation resistance testing on conductors. Check the operation of all circuit breakers ...



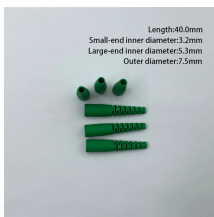
This preventative maintenance checklist ensures electrical distribution system dependability and safety. From circuit breakers to ...



The document provides a 16 item checklist for inspecting a main distribution board or panel board.



A clean and well-wired distribution box isn't just nice to look at — it's essential for safety, performance, and easy maintenance. Here are a few best practices to keep in mind during installation.



This preventative maintenance checklist ensures electrical distribution system dependability and safety. From circuit breakers to transformers, switches, & cables, this checklist lets ...



An electrical rough-in inspection is a crucial stage in the overall electrical installation process. It occurs after the installation of electrical boxes, cables, and conduits but before the drywall ...

## Contact Us

For more information, pricing, or custom solutions, please contact us:

Website: <https://www.samastersbaseball.co.za>

Email: [sales@samastersbaseball.co.za](mailto:sales@samastersbaseball.co.za)

Phone: +27 63 874 2095

Address: 15 Innovation Drive, Technopark, Stellenbosch, 7600, South Africa

This document is for informational purposes only. Specifications subject to change without notice.

