

## How to expand a switch with 10 Gigabit optical ports



### Overview

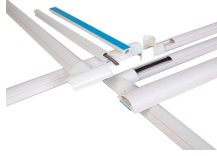
This guide intends to elucidate 10G SFP ports attached to Cisco switches with ease for a reader in a technical overview, where 10G SFP ports can be put to good use. When migrating from a 1G to a 10G network, the issue of SFP to SFP+ compatibility is often encountered. How do these two types of transceivers interact?

Can 1G SFP optics work with 10Gb SFP+ ports on a 10Gb switch, or vice versa?

This comprehensive guide reveals the intricacies of SFP and SFP+. SFP (small form-factor pluggable) port on network switch is a compact, hot-pluggable network interface. Typical speeds were 1 Gbit/s for Ethernet SFPs and up to 4 Gbit/s for Fiber Channel SFP modules. SFP port (electrical port and optical port) enables a gigabit switch to achieve fiber uplink over. Issue these commands to enable the 10-Gigabit Ethernet and/or the Gigabit Ethernet Small Form-Factor Pluggable (SFP) uplink ports: Note: On a Catalyst 4510R Series Switch, if you enable both the 10-Gigabit Ethernet and Gigabit Ethernet

SFP uplink ports, you must re-boot the switch. First, we will understand the port type and optical port type of the ten megabyte network card equipped by Huawei wantrillion switch. Huawei's 10 megabyte access network switch is. With the changing transmission rate of Ethernet switch, its port type is also changing, such as SFP port, SFP+ port, SFP28 port, QSFP+ port, QSFP28 port, etc.

## How to expand a switch with 10 Gigabit optical ports



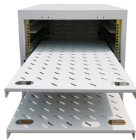
In 2021, 1/10G dual-rate SFP+ transceivers were designed for use in both 1-Gigabit and 10-Gigabit Ethernet links over single-mode fiber (SMF) or multi-mode fiber (MMF).



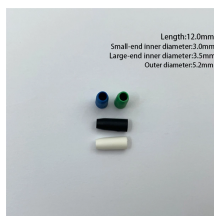
Most enterprise switches (Cisco, Aruba, Juniper) allow 10G SFP+ ports to accept 1G SFP modules. However, you may need to manually set the port speed to 1000Mbps in the switch ...



This article delves into the compatibility of SFP and SFP+ ports, addressing the question of whether the two types of ports are interoperable with each other.



Everything you should know about the issue of SFP to SFP+ compatibility. Will 1G SFP optics work with 10Gb SFP+ ports on a 10Gb switch? Or will 10Gb SFP+ run at 1Gb to link gigabit ...



Today, ETU-LINK will introduce the connection scheme of Huawei 10 megabyte switch and 10 megabyte network card. First, we will understand the port type and optical port type of the ten ...



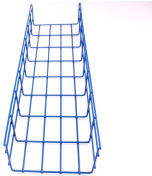
Everything you should know about the issue of SFP to SFP+ compatibility. Will 1G SFP optics work with 10Gb SFP+ ports on a 10Gb switch? Or will 10Gb SFP+ run at 1Gb to link gigabit ...



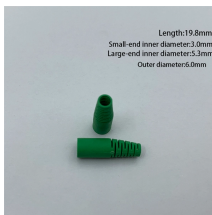
Issue these commands to enable the 10-Gigabit Ethernet and/or the Gigabit Ethernet Small Form-Factor Pluggable (SFP) uplink ports: Note: On a Catalyst 4510R Series Switch, if you ...



When an SFP+ optical module is used on the SFP+ port of a 10 Gigabit switch and an SFP optical module is used on the SFP port of a Gigabit switch, the SFP+ port ...



In 2021, 1/10G dual-rate SFP+ transceivers were designed for use in both 1-Gigabit and 10-Gigabit Ethernet links over single-mode fiber (SMF) or multi ...



Today, ETU-LINK will introduce the connection scheme of Huawei 10 megabyte switch and 10 megabyte network card. First, we will understand the ...



Discover the power of 10G SFP ports on Cisco switches. This guide explains 10 gigabits per second capabilities, uses, and benefits for network devices and routers.



Buy fiber network switches to extend ethernet network over fiber. Order Versitron high speed fiber optic network switches for fiber optic switches application. Our ethernet network switches are best for ...



10Gb Switch: The EnGenius Cloud Managed ECS5512 is an 8-port, layer 2+ 10 gigabit ethernet switch that comes with 4 10G uplinks ports. Est. reading time: 1 minute



When an SFP+ optical module is used on the SFP+ port of a 10 Gigabit switch and an SFP optical module is used on the SFP port of a Gigabit switch, the SFP+ port of the 10 Gigabit switch cannot be ...

## Contact Us

For more information, pricing, or custom solutions, please contact us:

Website: <https://www.samastersbaseball.co.za>

Email: [sales@samastersbaseball.co.za](mailto:sales@samastersbaseball.co.za)

Phone: +27 63 874 2095

Address: 15 Innovation Drive, Technopark, Stellenbosch, 7600, South Africa

This document is for informational purposes only. Specifications subject to change without notice.

