

How to connect the optical module to the switch



Overview

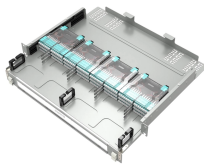
Identify the alignment key on the SFP module (a small groove or ridge on one side). Apply firm, even pressure directly along the. Small Form-factor Pluggable modules (SFP module) are the workhorses of modern network connectivity, enabling flexible fiber optic or copper links between switches, routers, firewalls, and servers. Whether you're upgrading bandwidth, replacing a faulty unit, or reconfiguring your topology, knowing. For those who are new to the world of optical cables or simply looking to connect one to a switch, this step-by-step guide will provide you with all the necessary information and instructions to successfully complete the process. When we need to replace a bottom-layer optical module and the corresponding upper-layer optical module is a type 2 optical module with a pull-tab latch, remove. This section describes how to install an optical module. Before you remove the dust plugs and make any optical connections, use these guidelines: Keep the protective dust plugs installed in the unplugged fiber-optic cable connectors and in the transceiver optical bores until you are. SFP and other optical modules are key components of any fibre optic network. They enable high-speed connections between active equipment and allow system scalability without the need for

full infrastructure replacement. It's essential to understand how to properly install and configure an SFP.

How to connect the optical module to the switch



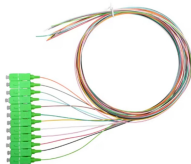
While keeping the handle of the transceiver module closed, grasp the two sides of the transceiver module with your thumb and forefinger and gently pull it. If the transceiver module does not pull out, it ...



Steps to attach the optical network cable. Before you remove the dust plugs and make any optical connections, use these guidelines: Keep the protective dust plugs installed in the ...



SFP transceivers allow for the transmission and reception of optical signals in networking devices such as switches, routers, and media converters. In this guide, we will walk you through the ...



In this step-by-step guide, we will walk you through the process of installing and removing SFP transceiver modules to ensure proper handling and avoid damage to the module or network ...



To connect an optical cable to an SFP module, use the appropriate patch cord (e.g., LC-LC, SC-LC, etc.). The patch cord must match the fibre type - single-mode or multi-mode. Once ...



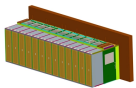
To extend the service life of the optical transceiver and prevent link failure, it is essential to follow the proper SFP installation and removal procedures as outlined in the tutorials above.



Install optical modules safely with ESD protection, proper handling, and dust control. Follow these steps to avoid damage and ensure network reliability.



For those who are new to the world of optical cables or simply looking to connect one to a switch, this step-by-step guide will provide you with all the necessary information and instructions to ...



Before replacing an optical module, determine in which cabinet and chassis the optical module is installed, find the optical module in the chassis, and attach a label to the optical module.



This video shows you how to properly use the optical transceiver module on the switch, including how to insert the module into the equipment and how to pull the module out.

Contact Us

For more information, pricing, or custom solutions, please contact us:

Website: <https://www.samastersbaseball.co.za>

Email: sales@samastersbaseball.co.za

Phone: +27 63 874 2095

Address: 15 Innovation Drive, Technopark, Stellenbosch, 7600, South Africa

This document is for informational purposes only. Specifications subject to change without notice.

