

How to configure VLANs on an optical module



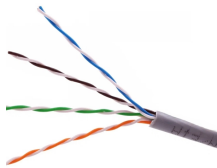
How to configure VLANs on an optical module



This document is a user manual for an OLT (Optical Line Terminal) device that provides instructions on configuring the device through a web management ...



For clients (VOIP/IPTV/PC/...) directly connected to the switch, we configure the port where it is located as VLAN untagged and configure the corresponding PVID for the port.



For clients (VOIP/IPTV/PC/...) directly connected to the switch, we configure the ...



8.1 Configuring Local End Outer VLAN Data.....	55
8.2 Adding Ports to the VLAN	56



This setup is useful when managing different barangay networks or segmenting your network using VLAN IDs (e.g., 20, 30, 40, 50, etc.) to maximize your MikroTik router's CPU efficiency.



To configure VLANs on a GPON OLT (Optical Line Terminal), access the OLT's management interface via a console or web interface, typically using an IP address...



This document provides a CLI configuration guide for FiberHome Optical Line Terminal equipment.



The installation process starts with the WAS-110's connection to an OLT through an XGS-PON optical line using certified optical fibers. During configuration, settings like Virtual Local Area ...



It is also important to understand what each part of the setup means and why it is necessary. In this blog, we will explain the most important things you should know when setting up ...



This shows configuring a VLAN bridge with VLAN tags on forwarding frames. Link between Bridge 1 and Bridge 2 is configured as VLAN 5 and link between Bridge 3 and Bridge 1 is configured as VLAN 10.



This chapter contains the following major sections:

- Understanding VLANs, page 8-1
- Configuring IEEE 802.1Q VLAN Encapsulation, page 8-2
- IEEE 802.1Q VLAN Configuration, page 8-3



Learn VLAN the easy way with clear explanations and see how reliable OPTCORE optical modules make your network run smoothly.



This article provides the steps needed to log into the OLT and start configuring the UFiber network. The UFiber network can be monitored and managed using the built-in Web UI or the Ubiquiti Network ...



If a specific VLAN (e.g., 100) is required by your ISP, enable VLAN mode and input the ID. For modules supporting "Transparent Mode," VLAN configuration may be skipped.

Contact Us

For more information, pricing, or custom solutions, please contact us:

Website: <https://www.samastersbaseball.co.za>

Email: sales@samastersbaseball.co.za

Phone: +27 63 874 2095

Address: 15 Innovation Drive, Technopark, Stellenbosch, 7600, South Africa

This document is for informational purposes only. Specifications subject to change without notice.

