

How many ports does a Category 6 network patch panel have



Overview

These high-density panels are available in 12 through 96 port versions and feature enhanced front and rear labeling features for easy circuit identification. Category 6+ panels support both T568A and T568B wiring configurations using an easy to read color-coded wiring label. The Relevance Inspector will open in the Coveo Administration Console. Cat 6 Flat Patch Panel, 24-Port, 1RU, Black. This 24-port universal 568A/B Category 6 rack mount patch panel is designed to take up a single rack space (1U), making it a compact and efficient solution for your network needs. If you are striving for a high speed Cat 6 network it is vital to have the Cat 6 patch panel in place that exceed all Cat 6 network. You're looking at options with 24 ports, sturdy construction, and features like Keystone compatibility or coupler variants. The right choice depends on your termination preference—tool-free or punch-down—and whether you need 10GbE capability. Designed to meet and exceed TIA/EIA 568-B. 2-1 standards, these panels are engineered specifically for Category 6 performance.

How many ports does a Category 6 network patch panel have



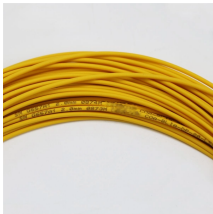
Cat 6 Flat Patch Panel, 24-Port, 1RU, Black. Cable Management bar included.



This 24-port universal 568A/B Category 6 rack mount patch panel is designed to ...



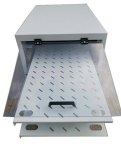
These high-density panels are available in 12 through 96 port versions and feature enhanced front and rear labeling features for easy circuit identification. Category 6+ panels support both T568A and ...



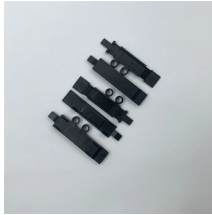
A quality Cat 6 patch panel will exceed Cat 6 cabling requirements to give you the 550 MHz network speeds you are seeking. The key to reaching the high performance that comes with a Cat 6 network ...



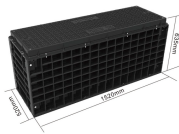
This 24-port universal 568A/B Category 6 rack mount patch panel is designed to take up a single rack space (1U), making it a compact and efficient solution for your network needs.



Our Category 5 or Category 6 network patch panels are available with 12, 24, 48 or 96 ports for keystone jack or rack mount setup.



Heavy duty 12 port patch panel supports Cat6 Ethernet and is backwards compatible with Cat5e Ethernet.



FS 24 port Cat 6 patch panels, STP/UTP Cat 6 Patch panels, shielded or unshielded, Feed-Through or punch down, 1U rack mount patch panel, 50 micron golden contacts.



The Rapink 12 Port Cat6 Network Patch Panel delivers solid performance at an accessible price point. This 1U, 10-inch wallmount unit supports 10 Gbps data transfer speeds and works with Cat6, Cat5e, ...



Ensure high-performance network connectivity with ICC's 48-Port CAT6 Patch Panel, designed for Gigabit Ethernet applications. Made from 16-gauge cold-rolled steel, this durable patch panel is ...



Equipped with a removable Mounting Plate inside the enclosure, enabling customized drilling and secure component mounting.

These high-density panels are available in 12 through 96 port versions and feature enhanced front and rear labeling features for easy circuit identification. Category ...



With a clean front-facing layout and 110-style rear terminations, these patch panels make installation straightforward and serviceable while supporting high-density cable management in rack-mounted

...

Contact Us

For more information, pricing, or custom solutions, please contact us:

Website: <https://www.samastersbaseball.co.za>

Email: sales@samastersbaseball.co.za

Phone: +27 63 874 2095

Address: 15 Innovation Drive, Technopark, Stellenbosch, 7600, South Africa

This document is for informational purposes only. Specifications subject to change without notice.

