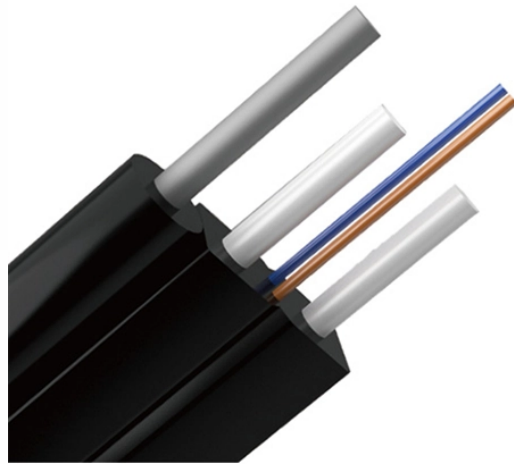


High-altitude cable tray operation techniques



Overview

Mark the trays and ladders routes as per the approved shop drawing; ensure these are of horizontal & vertical runs only. Maintain enough clearance for cable pulling and any access for future. us-trations without notice. All illustrations, descriptions and technical information included in this document are provided as indications and can cable trays are equivalent. The mechanical and electrical characteristics, tests, certifications, overall quality management, recommendations mentioned. en completely installed, without damage either to conductors or structural system use maintain spacing or to keep cables in place when the tray is ect the minimum bend ra-dius for cables as they exit the bottom of the cable tray. A rung spacing of 6 to 9 inches (150 to 230 mm) is preferable when. According to OSHA 1910. Cable tray systems include ladders, troughs, channels, solid bottom trays, and other. Is your cable tray system optimized for safety, dependability, space and cost savings?

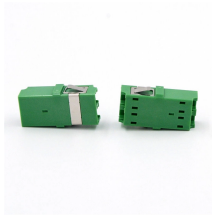
Cable tray (or cable ladder) systems are a popular alternative to electrical conduit systems, as they have an outstanding record for dependable service, design flexibility and cost savings in commercial and. This publication is

intended as a practical guide for the proper and safe* installation of cable ladder systems, cable tray systems, channel support systems and associated supports.

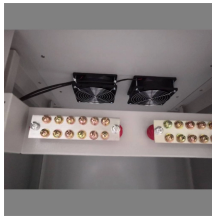
High-altitude cable tray operation techniques



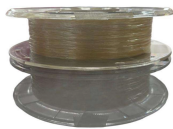
This method statement covers the site installation of the cable tray & ladders and the requirements of checks to be carried out.



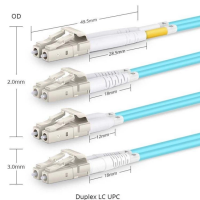
Cable tray length is selected based on the load to be supported, the distance between the supports (also referred to as the span), and handling and installation constraints.



Review the proper methods for safely installing, maintaining and inspecting electrical cable trays; Provide information regarding the hazards of overloaded cable trays;



Cable tray layout must take into consideration the design limits of the cable. To minimize damage and verify integrity after installation, follow the practices outlined in cable handling and ...



When fitting cable trays and their accessories, the products are cut on site to create changes of direction, adjust sections, etc. Damage can also occur during handling; as a result, both the ...



The Cable Tray Institute has several standards and guidelines for the construction, testing, performance, and installation of cable tray. More information can be found here: ...



Cable tray sections must be in accordance with the cable types and/or the number of cables installed in it, respecting the maximum filling ratio, according to the cable tray type.



This article explains the main requirements and good practices for cable tray systems, including tray types, materials, loading, supports, bonding, cable selection, and installation details.



Hubbell's NEXTFRAME® Ladder Tray is the effective and widely used cable runway that supports and delivers bundles of cable between cabinets, racks, and closets, along walls, and suspended from ...



This publication is intended as a practical guide for the proper and safe* installation of cable ladder systems, cable tray systems, channel support systems and associated supports.



Our wind certification report provides you with list of acceptable B-Line series cable tray supports, fittings and covers based off of the environmental conditions, cable loading, and type of cable tray in your ...

Contact Us

For more information, pricing, or custom solutions, please contact us:

Website: <https://www.samastersbaseball.co.za>

Email: sales@samastersbaseball.co.za

Phone: +27 63 874 2095

Address: 15 Innovation Drive, Technopark, Stellenbosch, 7600, South Africa

This document is for informational purposes only. Specifications subject to change without notice.

