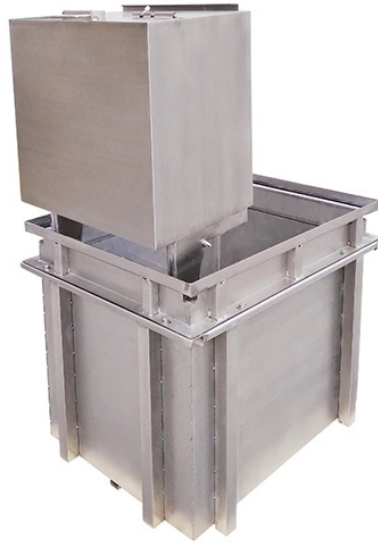


## Guatemalan Customs Clearance Enterprise-Grade Optical Router QSFP



### Overview

Our fully automated EXPRESSCLEAR system provides rapid, accurate processing for clearance of your international shipments before the plane even leaves the ground. Are ISP-provided residential gateways that combine modem and router functions in a single device classified as routers under the definition in the determination?

Or does the integrated modem functionality place them outside the scope?

Can an applicant seek entity-level Conditional Approval covering. The SAT is also in charge of managing the customs system of Guatemala, for which a special section on customs matters has been created for the different auxiliaries and users of the Customs of Guatemala. You will find general information about customs, auxiliaries and procedures. Embassies worldwide by Commerce Department, State Department and other U. agencies' professionals Customs Regulations Imports in Guatemala are significantly affected by. Importer of Record (IOR) and Exporter of Record (EOR) services in Guatemala for telecommunications infrastructure, enterprise IT equipment,

electronics and manufacturing machinery, data centre hardware, laboratory and research instruments, renewable energy systems, and regulated medical devices. Crowley provides fast, reliable supply-chain solutions to and from Central America, by reducing friction points, along with overall landed costs. Our integrated approach increases the velocity with which goods move to market. We can seamlessly handle any logistics requirement with unique. The Cisco 100GBASE Quad Small Form-Factor Pluggable (QSFP) portfolio offers customers a wide variety of high-density and low-power 100 Gigabit Ethernet connectivity options for data center, high-performance computing networks, enterprise core and distribution layers, and service provider.

## Guatemalan Customs Clearance Enterprise-Grade Optical Router QS



Our fully automated EXPRESSCLEAR system provides rapid, accurate processing for clearance of your international shipments before the plane even leaves the ground.



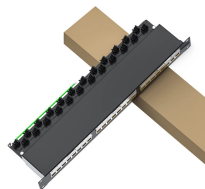
Yes, foreign suppliers can use Uproot Technologies as Importer of Record (IOR) and Exporter of Record (EOR) to complete compliant Customs clearance.



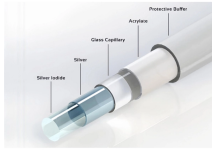
Is my device a consumer-grade router under the National Security Determination? Is there a list of indicators, totality of circumstances test, or layer-based criteria, separate from NIST IR ...



Includes customs regulations and contact information for this country's customs office.



Everything you need to know about customs procedures in Guatemala. Consult the legal framework and procedures to expedite your procedures.



Producers of consumer-grade routers are encouraged to submit an application for Conditional Approval using the guidance attached to the determination. Applications should be submitted to conditional ...



Find out if your router is banned, when to expect firmware updates and what the latest news on the Federal Communications Commission ban means for your home network.



Is my device a consumer-grade router under the National Security Determination? Is there a list of indicators, totality of circumstances test, or layer ...



Please, refer to FAS export certificate report to get more detailed information on the U.S. export certificates approved in Guatemala and additional information required to comply with ...



The Cisco 100GBASE Quad Small Form-Factor Pluggable (QSFP) portfolio offers customers a wide variety of high-density and low-power 100 Gigabit Ethernet connectivity options for ...



Our experienced team can walk you through every step of the import and export process and will help you clear your cargo fast, while mitigating risk of penalties or delays.

## Contact Us

For more information, pricing, or custom solutions, please contact us:

Website: <https://www.samastersbaseball.co.za>

Email: [sales@samastersbaseball.co.za](mailto:sales@samastersbaseball.co.za)

Phone: +27 63 874 2095

Address: 15 Innovation Drive, Technopark, Stellenbosch, 7600, South Africa

This document is for informational purposes only. Specifications subject to change without notice.

