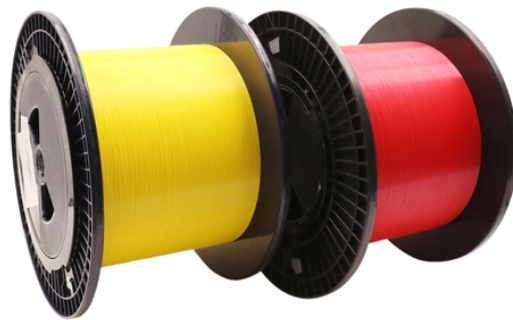


Grounding wire cable tray in the equipment room



Overview

Grounding: Metallic trays can serve as equipment grounding conductors (EGC) if they meet NEC requirements. There is no restriction as to where the cable tray system is installed. The metal in cable trays may be used as the EGC as per the limitations. Cable tray grounding is an indispensable aspect of electrical installations that plays a pivotal role in ensuring safety, reliability, and efficiency. Consider it as an emergency electricity exit.



Grounding wire cable tray in the equipment room



A bare copper equipment grounding conductor should not be placed in an aluminum cable tray due to the potential for electrolytic corrosion of the aluminum cable tray in a moist environment. For such ...



Learn the essential role of Equipment Grounding Conductors (EGC) in cable tray systems, including sizing requirements, installation standards, and NEC compliance for electrical safety.



This comprehensive guide delves into the complexities of cable tray grounding, offering in-depth insights into its importance, principles, design considerations, installation best practices, and ...



Metallic cable trays must be grounded and can serve as an equipment grounding conductor if the metal cross-sectional area meets minimum requirements. Proper bonding of cable tray sections is also ...



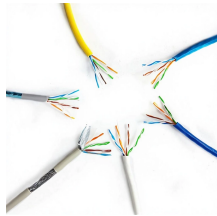
Discover the best practices for Cable Tray Grounding Wire installation. Learn key requirements, safety tips, and material choices to ensure a grounding system.



“Metallic cable trays that support electrical conductors shall be grounded as required for conductor enclosures in accordance with 250.96 and part IV of Article 250.”



All metallic cable trays must be grounded as outlined in NEC Article 250.96, even if the tray isn't being used as an equipment grounding conductor (EGC). This precaution helps prevent ...



This article provides a comprehensive framework that governs various aspects of cable tray installations, including the types of cables that are deemed acceptable for use, requirements for ...



This comprehensive guide delves into the complexities of cable tray grounding, offering in-depth insights into its importance, principles, design ...



Electrically paralleling the single conductor EGC with the Cable Tray by bonding the single conductor EGC to the cable tray every 50 to 100 feet produces an installation that may provide some degree of ...



All metallic cable trays shall be grounded as required in Article 250.96 regardless of whether or not the cable tray is being used as an equipment grounding conductor (EGC). The EGC ...

Contact Us

For more information, pricing, or custom solutions, please contact us:

Website: <https://www.samastersbaseball.co.za>

Email: sales@samastersbaseball.co.za

Phone: +27 63 874 2095

Address: 15 Innovation Drive, Technopark, Stellenbosch, 7600, South Africa

This document is for informational purposes only. Specifications subject to change without notice.

