

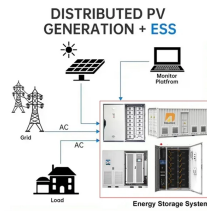
GPON optical module routing



Overview

It contains built-in 10G Ethernet to XGS PON MAC Bridge IC and L1 optical transceiver. It supports port by port expansion on NCS540 and. Optical Distribution Network (ODN) - The physical fibre and optical devices that distribute signals to users in a telecommunications network. The ODN is composed of passive optical components (POS), such as optical fibers, and one or more passive optical splitters. Optical Network Termination (ONT). PON (Passive Optical Network) is a point-to-multipoint (P2MP) structured passive optical network. It is commonly used to implement the link to the customer (the last kilometre, or last mile) of fibre-to-the-premises (FTTP) services, using a. Sandia National Laboratories is a multi-program laboratory managed and operated by Sandia Corporation, a wholly owned subsidiary of Lockheed Martin Corporation, for the U. Department of Energy's National Nuclear Security Administration under contract DE-AC04-94AL85000.

GPON optical module routing



GPON is an alternative to Ethernet switching in campus networking. GPON replaces the traditional three-tier Ethernet design with a two-tier optic network which eliminates access and ...



The Optical Line Terminal (OLT) serves as the critical gateway in GPON networks, seamlessly managing the flow of data from service providers to end-users. In this blog post, you'll ...



Comprehensive guide to Passive Optical Networks (PON), covering OLT, ODN, ONU/ONT, GPON/XGSPON/NG-PON2 standards, deployment strategies, and FTTH network ...



Learn how GPON OLT works, its features, and how to choose the right device for efficient fiber network deployment.



Multiple link redundancy protocols including STP / RSTP / MSTP / ERPS / LACP CLI, GUI, SNMP V3, 802.3ah OAM, RFC 3164 Syslog Line card options include: 16 GPON SFP ports 16 Combo PON ...



It contains built-in 10G Ethernet to XGS PON MAC Bridge IC and L1 optical transceiver. The integrated chip allows the module to connect to a PON network to a point-to-point Ethernet ...



OLTs typically operate using redundant DC power (-48VDC) and have at least 1 Line card for incoming internet, 1 System Card for on-board configuration, and 1 to many GPON cards. Each GPON card ...



Introduction to GPON Gigabit Passive Optical Network (GPON) Access layer technology Based on ITU-T G.984 standards Uses active and passive components



UFiber WiFi Fiber WiFi is a robust, high-performance GPON CPE that offers routing, four LAN ports, and Wi-Fi. It is powered by 24V passive PoE or a 24V, 0.5A power adapter.

Contact Us

For more information, pricing, or custom solutions, please contact us:

Website: <https://www.samastersbaseball.co.za>

Email: sales@samastersbaseball.co.za

Phone: +27 63 874 2095

Address: 15 Innovation Drive, Technopark, Stellenbosch, 7600, South Africa

This document is for informational purposes only. Specifications subject to change without notice.

