

Function of Relay Protection Switches



Overview

Definition of Protective Relay A protective relay is an automatic device that detects abnormalities in an electrical circuit and closes its contacts. Currently residing in Denver, Colorado. Previous experience in designing low voltage and medium voltage switchgear, relay panels and custom control panels as an Electrical Engineer at ESSMetron, Denver CO. The rectangular devices are test connection blocks, used for testing and isolation of instrument transformer circuits. : 4 The first protective relays were electromagnetic. IEEE/IAS/I&CPSD Protection & Coordination WG Chair Jacobs Canada, Calgary, AB rasheek. It functions as a watchdog by constantly surveying multiple system components including voltage, current, frequency, and phase angle.

Function of Relay Protection Switches



The protection relay's main functions are; the detection of fault presence, fault location, fault type, etc. This relay helps in closing the trip circuit and operates the CB to separate the faulty ...



A microprocessor-based digital protection relay can replace the functions of many discrete electromechanical instruments. These relays convert voltage and currents to digital form and process ...



Protective relays play a crucial role in power system protection, ensuring safety, reliability, and continuity of electrical supply. From traditional electromechanical relays to modern ...



Protective relaying aims to stop that chain reaction before it starts, detecting problems instantly, cutting off the affected section, and keeping the rest of the system stable and safe.



Definition of Protective Relay A protective relay is an automatic device that detects abnormalities in an electrical circuit and closes its contacts. This action completes the circuit ...



There are many types of protective relay functions, but this presentation will focus on the most common type, basic overcurrent device 50/51 (instantaneous and time overcurrent).



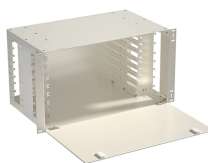
The protection relay detects a problem during its early stage & significantly reduces or eliminates damage to equipment. This relay device is mainly designed to trip a CB (circuit breaker) once a fault ...



They are intended to quickly identify a fault and isolate it so the balance of the system continue to run under normal conditions. The selection and applications of protective relays and their associated ...



Protection relays protect generators from malfunctions like loss of excitation, overvoltage, and reverse power. Protection relays aid in preserving the integrity of generators, guard against ...



Protection is needed to detect electrical faults and abnormal operating conditions. Protection is also needed for protecting people and property around the power network. The protected zone is the part ...

Contact Us

For more information, pricing, or custom solutions, please contact us:

Website: <https://www.samastersbaseball.co.za>

Email: sales@samastersbaseball.co.za

Phone: +27 63 874 2095

Address: 15 Innovation Drive, Technopark, Stellenbosch, 7600, South Africa

This document is for informational purposes only. Specifications subject to change without notice.

