

## Force Startup of Optical Module



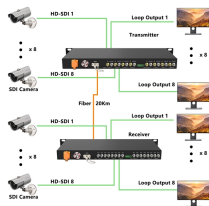
### Overview

This guide provides detailed, professional steps to ensure you perform these tasks correctly every time, minimizing downtime and maximizing your hardware investment. We'll also explore the advantages of using reliable brands like LINK-PP for consistent performance. Being an industry group uniting representatives of the data and optical worlds, OIF's purpose is to accelerate the deployment of interoperable, cost-effective and. As core components of optical communication systems, the proper installation and use of optical modules directly impacts network stability. After an optical module is installed on a device, the device does not respond. The working rate, duplex mode, and negotiation mode of the two ends of the optical interface are different. Specific troubleshooting methods and. Small Form-factor Pluggable modules (SFP module) are the workhorses of modern network connectivity, enabling flexible fiber optic or copper links between switches, routers, firewalls, and servers. Whether you're upgrading bandwidth, replacing a faulty unit, or reconfiguring your topology, knowing.

## Force Startup of Optical Module



Do not force the module out without opening the pull-tab first. Doing so may damage the module or deform the host's internal locking spring, affecting future module insertion and unlocking.



During the test, it was found that it was normal for the same optical port to be repeatedly inserted and removed with a 1G optical module, but it was abnormal with a 10G optical module.



Explore the essential principles and types of optical modules for fiber optic communication systems.



Explore the essential principles and types of optical modules for fiber optic communication systems.



Check whether the transmit optical power and receive optical power of the optical module are within the normal range. If the transmit optical power is beyond the normal range, replace the ...



This chapter describes how to configure the Optical Amplifier Module and Protection Switching Module (PSM). When you plan to replace a configured optical module with a different type of optical module, ...



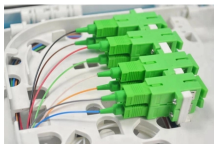
As core components of optical communication systems, the proper installation and use of optical modules directly impacts network stability. This article systematically identifies common ...



In this article, we will focus on teaching you how to troubleshoot and solve the common three categories of optical module failure. First, the transmission class of the optical module fault ...



View the TI Optical module block diagram, product recommendations, reference designs and start designing.



In this white paper we explore how the DWDM functions, parameters, and operational aspects of “smart” optical pluggable modules can be handled more efficiently in order to deal with the ...



Do not rock, twist, or force the module. If significant resistance is felt, stop, remove the module, recheck the orientation, and inspect the port. Push the module all the way in until you feel it ...

## Contact Us

For more information, pricing, or custom solutions, please contact us:

Website: <https://www.samastersbaseball.co.za>

Email: [sales@samastersbaseball.co.za](mailto:sales@samastersbaseball.co.za)

Phone: +27 63 874 2095

Address: 15 Innovation Drive, Technopark, Stellenbosch, 7600, South Africa

This document is for informational purposes only. Specifications subject to change without notice.

