

Fiber optic cable splicing quality issues



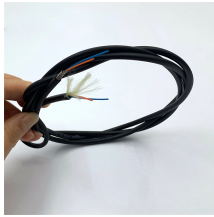
Overview

According to authoritative guides from the Fiber Optic Association, a poor cleave angle is a primary cause of high splice loss. A high-quality cleaver is non-negotiable for achieving acceptable results, especially for fusion splicing, where the goal is a near-seamless connection. The performance of a fiber optic splice is determined by a number of factors, including the quality of the fiber, the cleanliness of the splice, and the techniques used to make the splice. When done right, splicing ensures minimal loss and long-lasting performance. Whether you are building a new backbone, restoring service after damage, or upgrading an existing route, disciplined fiber optic splicing techniques determine. Fiber optic splicing is the process of joining two optical fibers end-to-end.

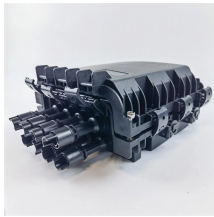
Fiber optic cable splicing quality issues



Causes include poor fusion splicing, misalignment of fiber cores, excessive cleave angle, or contamination in the splice. Re-splice the fiber if ...



Fiber splice loss is caused by core mismatch, contamination, and misalignment. Reduce loss with proper cleaning, alignment, and splicing techniques.



This is where fiber optic cable splicing—the process of creating a permanent, high-performance join between two fiber ends—becomes critical. For network managers and technicians, ...



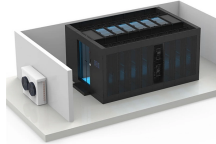
This guide will walk you through the complete process of fiber optic splicing—covering each step in detail so you can deliver a clean, professional splice every time.



The primary function of fiber optics is to transmit data as light signals. Any imperfection at the splicing point can cause signal loss or attenuation, leading to reduced performance and slower ...



A reliable fiber-optic network depends on more than selecting the right cable and connectors; it hinges on the quality of every splice. Whether you are building a new backbone, ...



In this edition of our LinkedIn Newsletter, we break down the four biggest reasons fiber splicing fails and how you can fix them instantly.



Learn Fiber Optic Fusion Splicing: step-by-step guide to safe, precise fiber prep, fusion, and testing for low-loss, high-quality splices in optic networks.



Causes include poor fusion splicing, misalignment of fiber cores, excessive cleave angle, or contamination in the splice. Re-splice the fiber if necessary and ensure proper alignment and ...



Learn the the intrinsic and extrinsic factors that can impact fiber optic splice performance and how you can create the best fiber optic network.



Strip the buffer tube and individual fibers with the right tool for each layer — never use a utility knife. The most common cause of bad splices is contamination. Clean every fiber with IPA before cleaving. ...

Contact Us

For more information, pricing, or custom solutions, please contact us:

Website: <https://www.samastersbaseball.co.za>

Email: sales@samastersbaseball.co.za

Phone: +27 63 874 2095

Address: 15 Innovation Drive, Technopark, Stellenbosch, 7600, South Africa

This document is for informational purposes only. Specifications subject to change without notice.

