

Fiber optic cable on top of communication pole



Overview

Overhead installation refers to the process of aurally deploying fiber optic cables on utility poles, aerial supports, and existing overhead infrastructure. Instead of burying the cables underground, they are suspended above the ground, often attached to existing utility poles or. Introduction Review Of Fiber Optic Technology. Project Preparation And Guidelines. Underground Cable Construction. FO-VC2 JOINT USE - VERICAL MIDSPAN CLEARANCES 48.



Fiber optic cable on top of communication pole



Deploying fiber above ground on poles or towers removes the need for underground digging and is particularly useful when the ground is uneven, rocky or both. Aerial installation is generally much less ...



Fiber optic communication often converts downstream to telephone cables, but this requires large cabinets which are going to be ground-mounted. However, fiber can be converted to coaxial with ...



You can share this guide with communication companies that attach (or want to attach) to your poles. It helps them understand the required clearances and why they matter.



Field Identification: Fire Department cables can be easily recognized, as it is usually two small cables that travel parallel to each other, about 4" apart, from pole to pole (Figure 3-12).



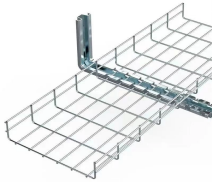
Coil brackets are used to safely store extra fiber cable on a pole for future needs or restoration efforts. The top of the cable loop and/or canister must be installed at least 12 inches below the lowest ...



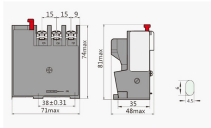
Overhead fiber optic cable are designed to be suspended from utility poles or dedicated structures, leveraging existing aerial infrastructure to minimize construction costs.



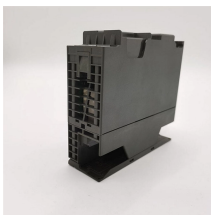
Fiber optic cables are the modern communication channels that play an important role in transmitting huge volumes of information at the speed of light. But should ...



Overhead installation refers to the process of aerially deploying fiber optic cables on utility poles, aerial supports, and existing overhead infrastructure. Instead of burying the cables ...



The owner of the proposed communication cable shall not “weave” its cables from one vertical position to another with respect to other communication cables on the same sides of the pole line route.



Fiber optic cable sequential numbers are required at each pole location and vault wall. Sequential numbers will identify conduit length, and slack left in vaults and at poles.



Installation is similar to installing a messenger wire except it also includes a fiber optic cable that requires careful handling like any other fiber optic cable.

Contact Us

For more information, pricing, or custom solutions, please contact us:

Website: <https://www.samastersbaseball.co.za>

Email: sales@samastersbaseball.co.za

Phone: +27 63 874 2095

Address: 15 Innovation Drive, Technopark, Stellenbosch, 7600, South Africa

This document is for informational purposes only. Specifications subject to change without notice.

