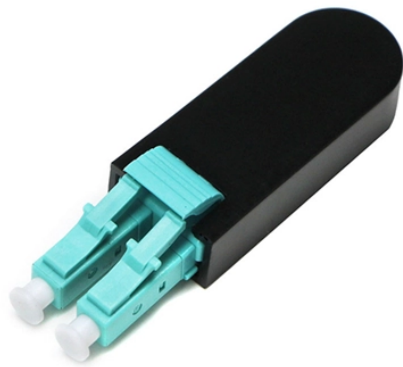


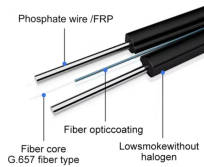
## Elevation of cable tray bottom



## Elevation of cable tray bottom



Some applications may require the cable tray to support the weight of a single, dead object in addition to the cable loads. Specifications typically require this to be applied at the midpoint of the span between ...



Generating the correct elevation of cable trays for the ortho drawings in Plant3D can be tricky. But a very simple solution is here!



Starting Elevation: The starting elevation of the cable tray. The reference point for the starting elevation of the cable tray is set by the Vertical Alignment .



Check your cable tray or conduit run to find out if you need to add more segments or change the elevation of other segments in order to reconnect the run. Optionally connect segments by adding ...



Show fabrication and installation details of cable tray, including plans, elevations, and sections of components and attachments to other construction elements.



Designer shall provide a 12" vertical working clearance above the cable tray with no continuous obstructions. In addition, a 12" space must be provided on either side for working access.



Our wind certification report provides you with list of acceptable B-Line series cable tray supports, fittings and covers based off of the environmental conditions, cable loading, and type of cable tray in your ...



The elevation can be picked from the selected element by clicking the button. Select in the lower drop-down menu which point of the cableway is set at the chosen elevation: lower edge, centerline or ...



Cable tray fill per NEC Article 392 for ladder, ventilated trough, solid bottom, and channel trays. Multi-conductor and single-conductor rules.



7.1.22 The elevation of the bottom of the lowest cable tray shall be minimum of 2.67M above the substation floor. 7.1.23 Minimum clearance in horizontal angle between tray and building wall shall ...



For cable tray: Click in the Add Cable Trays dialog box. In the Cable Tray Layout Preferences dialog box on the Routing tab, select Automatically create riser at new Elevation.

## Contact Us

For more information, pricing, or custom solutions, please contact us:

Website: <https://www.samastersbaseball.co.za>

Email: [sales@samastersbaseball.co.za](mailto:sales@samastersbaseball.co.za)

Phone: +27 63 874 2095

Address: 15 Innovation Drive, Technopark, Stellenbosch, 7600, South Africa

This document is for informational purposes only. Specifications subject to change without notice.

