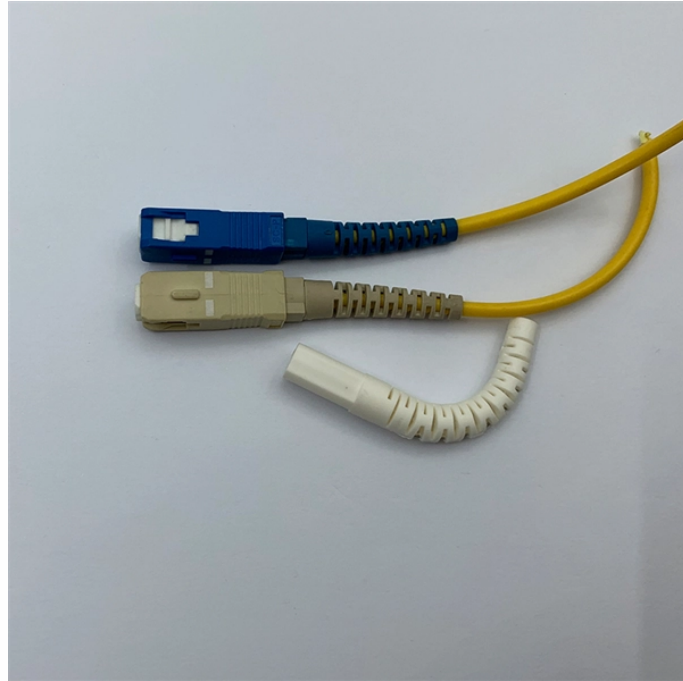


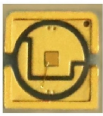
## Dual-core OEM Smart Patch Panels for Local Area Networks



## Dual-core OEM Smart Patch Panels for Local Area Networks



This complete & intelligent-ready physical layer management system uses RFID technology for wireless detection of individual patch cords & real-time monitoring of unintended physical changes in network ...



Accommodating fully shielded or unshielded cables, these easy-to-assemble Patch Panels can be ordered with or without patching switches and with or without provisions for RiT's PatchView™ system.



Shop our smart patch panels for reliable and efficient cabling solutions. Enjoy features like surge protection and robust construction for your network.



Amphenol Network Solutions C2X panel is a solution for Central Offices, Data Centers, Edge Networks, Metro Networks, Cell Sites, and Access Networks. The C2X" chassis supports multiple patch panels, ...



Leviton offers the industry's largest selection of high-quality copper and fiber optic patch panels to support the latest technologies and provide ideal configurations for unique applications.



Experience cutting-edge connectivity with our next-generation voice and data copper cabling system. Utilizing advanced Category technology, it delivers superior performance with enhanced bandwidth ...



SYSTIMAX iPatch® hardware, including intelligent copper panels, fiber optic shelves and infrastructure control systems, give you Vision into real-time changes to your physical layer network.



The dual-core Uniboot patch cord integrates two optical fibers into a 2.0mm or 3.0mm optical cable, increasing the cable management capability of the pre-terminated system



Extreme Networks® 10304-2M-AOC to Palo Alto Networks® PAN-SFP-PLUS-SR Compatible TAA Compliant 10GBase-CU SFP+ to SFP+ Direct Attach Cable (850nm, MMF, 2m) Add to quote ADD ...



AMPCOM patch panels offer high-density copper & fiber termination for data centers, offices, and AV systems. Modular design, shielded ports, and easy installation for reliable signal routing.

## Contact Us

For more information, pricing, or custom solutions, please contact us:

Website: <https://www.samastersbaseball.co.za>

Email: [sales@samastersbaseball.co.za](mailto:sales@samastersbaseball.co.za)

Phone: +27 63 874 2095

Address: 15 Innovation Drive, Technopark, Stellenbosch, 7600, South Africa

This document is for informational purposes only. Specifications subject to change without notice.

