

Domain Function of Fiber Optic Switches



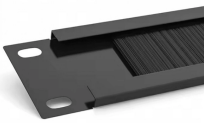
Overview

A fiber optical switch is a multi-port telecommunications network bridging device primarily used to connect multiple optical fibers and control the routing of data packets between inputs and outputs. Fiber optic technology is widely recognized for significantly advancing modern networking by enabling high-speed, low-latency, and interference-resistant communication across various applications. Among the essential components in fiber-based networks are fiber optic switches, which help optimize. Fiber-optic switches control light paths within fiber optics, ranging from simple on/off types to complex matrix configurations like 64×64 . If any node. The Optical Time Domain Reflectometer (OTDR) is useful for testing the integrity of fiber optic cables. It can verify splice loss, measure length and find faults. They are used in a wide range of applications, including telecommunications, data centers, industrial automation, and military and aerospace. Fiber optic switches offer numerous advantages over traditional.

Domain Function of Fiber Optic Switches



There are two types of fiber optic switches commonly available. A so-called "moving fiber switch" and a switch that converts an incoming light signal to an electrical signal, performs its switching functions in ...



Fiber optic switches are designed to minimize latency and optimize network performance, which is particularly crucial for ensuring seamless scalability and efficiency in many cloud computing ...



The main application area is optical fiber communications, where fibers carry telecommunications signals and fiber-optic switches are used mainly for routing optical signals.



Optical switches are devices that route light signals from one path to another without converting them into electrical signals first. They're a core component in fiber-optic networks, where ...



Optical switches operate purely at the physical layer of the network, meaning they are concerned only with the physical path of the light beam. Because the signal remains as light, the ...



A fiber optical switch is a multi-port telecommunications network bridging device primarily used to connect multiple optical fibers and control the routing of data packets between inputs and ...



In this work, we present an all-fiber architecture for a high-speed core-selective switch, crucial for efficient signal distribution in multicore networks.



The Optical Time Domain Reflectometer (OTDR) is useful for testing the integrity of fiber optic cables. It can verify splice loss, measure length and find faults.



Fiber optic switches are devices used to control the flow of light in fiber optic networks. They are used in a wide range of applications, including telecommunications, data centers, industrial ...



Fiber switches play an essential role in meeting these demands, especially in enterprise data centers, telecommunications, and cloud infrastructures. This article will explain what a fiber ...

Contact Us

For more information, pricing, or custom solutions, please contact us:

Website: <https://www.samastersbaseball.co.za>

Email: sales@samastersbaseball.co.za

Phone: +27 63 874 2095

Address: 15 Innovation Drive, Technopark, Stellenbosch, 7600, South Africa

This document is for informational purposes only. Specifications subject to change without notice.

