

## Distribution box maintenance spacing



### Overview

The distance between a septic tank and a distribution box varies depending on soil type, system design, and the number of leach field lines. Architects and Engineers Electrical Contractors Plumbing Contractors City and County Building Inspectors Manufacturers of Electrical Equipment Pacific Gas and Electric Company Employees 2022-2023 Edition (Supersedes All Previous Editions and Revisions) The Electric and Gas Service. Dedicated space: The space equal to the width and depth of electrical equipment in addition to the space extending from the floor to 6 feet above the equipment or structural ceiling. 26 (A)] and dedicated space to provide access to, and protection of, equipment [110. Equipment that may need examination, adjustment, servicing, or maintenance while energized. Change list- The following is a list of Decisions and Resolutions which authorized statewide general changes to this Order, applicable to all operators of underground systems. All electrical equipment requires some degree of working space to allow access and safe operation and maintenance of the equipment. Very specific minimum working space.

## Distribution box maintenance spacing



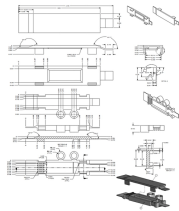
Learn how far a distribution box should be from a septic tank and why proper placement is critical for wastewater flow and drain field efficiency. This guide covers recommended distances, placement ...



Regularly inspect the D-box for blockages or damage. Ensure that the box is level to maintain even distribution. Clear any clogs or debris that may affect the flow of effluent.



These requirements apply as long as applicants complete the approved projects within 18 months.



When maintenance gets skipped, small issues grow into big headaches. We've all seen it—that weird burning smell in older buildings or the flickering lights that become "normal." So let's ...



This preventative maintenance checklist ensures electrical distribution system dependability and safety. From circuit breakers to transformers, switches, & cables, this checklist lets ...



The requirements specified in these rules as to spacing, clearance, and strength of construction are limiting conditions expressed as minimum or maximum values as indicated.



Working space: The front clearance, side clearance, and height clearance requirements for electrical equipment that provide a safe area for maintenance, inspections, and other work.



Very specific minimum working space dimensions are required when the equipment requires examination, adjustment, servicing, or maintenance while energized, such as panelboards, ...



For electricians and maintenance professionals, understanding proper MCB distribution box maintenance is essential. This guide outlines practical, field-tested maintenance tips that every ...



Equipment that may need examination, adjustment, servicing, or maintenance while energized must have working space provided per 110.26 (A) (1), (2), (3), and (4).

## Contact Us

For more information, pricing, or custom solutions, please contact us:

Website: <https://www.samastersbaseball.co.za>

Email: [sales@samastersbaseball.co.za](mailto:sales@samastersbaseball.co.za)

Phone: +27 63 874 2095

Address: 15 Innovation Drive, Technopark, Stellenbosch, 7600, South Africa

This document is for informational purposes only. Specifications subject to change without notice.

