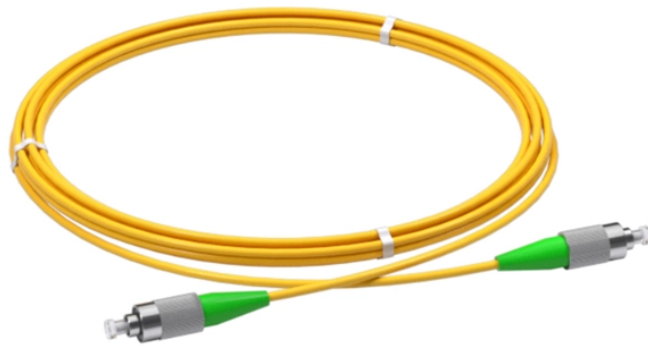


Distance between distribution box and industrial area



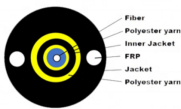
Overview

This chart guides how close workers can safely get to energized equipment based on system voltages and other factors, ensuring compliance with safety standards such as NFPA 70E. Working space: The front clearance, side clearance, and height clearance requirements for electrical equipment that provide a safe area for maintenance, inspections, and other work. The requirements of Rules 2-308 and 2-310 are particular to certain types of equipment (i. equipment with or without draw-out parts). Electrical clearances are the minimum separation distances the National Electrical Code (NEC) requires between wiring, panels, overhead conductors. Spaces around electrical equipment (width, depth, and height) consist of working space for worker protection [110].

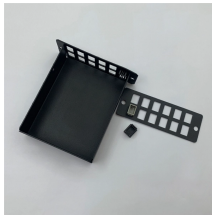
Distance between distribution box and industrial area



Equipment manufacturer shall be consulted to get the distances of equipment draw out parts (referred to as “D1” and “D2”). The total clearance (space) in front of the electrical equipment shall be the ...



Visual guides can illustrate the necessary distances and help ensure that all employees are aware of the proper clearance specifications, thus promoting compliance and workplace safety.



Minimum clearances are established for work spaces in front of high voltage - electrical equipment such as switchboards, control panels, switches, circuit breakers, switchgear and motor controllers. These ...



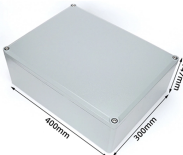
Side clearance: There should be a minimum of 30 inches of clearance from the sides of all electrical equipment, but in no case less than the width of the equipment itself. This is referred to as the side-to ...



Understanding these dimensions is critical for any installation, from a simple residential panel to complex industrial switchgear. The National Electrical Code (NEC) article 110.26 is the cornerstone for ...



a) 3-foot minimum from combustible building surfaces to the edge of the pad. b) 2-foot minimum from non-combustible building surfaces to the edge of the pad. Non-combustible materials include brick, ...



Before guards are removed from energized equipment, the employer shall install barriers around the work area to prevent employees who are not working on the equipment, but who are in the area, ...



The minimum approach distance chart is a critical tool for ensuring the safety of workers in electric power systems, particularly in transmission and distribution environments.



It is unacceptable to be subjected to additional dangers by working around bicycles, boxes, crates, appliances, and other impediments. Don't work in such an area until these items are removed.



Every electrical panel, breaker box, meter base, and service disconnect needs a clear working zone in front of it so that someone can safely operate the equipment or respond to an ...

Contact Us

For more information, pricing, or custom solutions, please contact us:

Website: <https://www.samastersbaseball.co.za>

Email: sales@samastersbaseball.co.za

Phone: +27 63 874 2095

Address: 15 Innovation Drive, Technopark, Stellenbosch, 7600, South Africa

This document is for informational purposes only. Specifications subject to change without notice.

