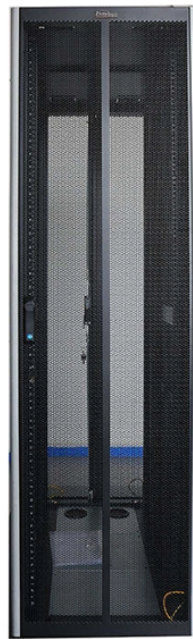


Dimensions of the double-door electrical distribution box inner and outer doors



Dimensions of the double-door electrical distribution box inner and



This guide explains standard electrical box dimensions by type, compares common sizes, and helps you select the right box for residential, commercial, and light industrial applications.



Designed for demanding racking applications, these double-door enclosures offer superior strength to house heavy equipment while remaining significantly lighter than steel counterparts.



Whether you need a dedicated metering kiosk or a high-capacity enclosure for power distribution, our double-door collection provides the space, security, and access you need.



Electrical enclosure sizes are not universal, but most manufacturers follow common size families. This guide explains typical wall-mount and floor ...



Double Door Surface Mount Distribution Boards (DB) - Triple Row Double door DB comes with a main compartment and a triple way DB. Inner door or cover plates are included.



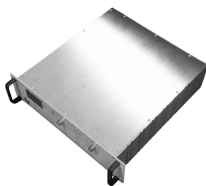
Stainless Steel Distribution Box with Inner-Outer Door is constructed by bending and welding SUS304 stainless steel plates, featuring an inner door design and a double-sloped top.



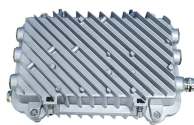
Earth & Neutral bars on each row. Busbar not supplied. • Powder coated, UV resistant mild steel kits. If this product is purchased and no stock is available, our team will contact you with the option of a full ...



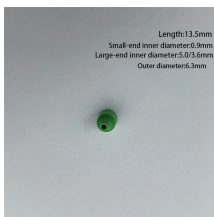
These meet most door-in-door specifications. NEMA 1 trim fronts may be factory ordered with special features such as outer door locks, padlock hasp, or welded metal directory card holders.



Our company's main products include operation consoles, monitoring TV walls, standard 19 inch cabinets, standard 19 inch chassis, monitoring poles, sheet metal chassis, etc.



Austin freestanding double door NEMA 12 enclosures are Underwriters Laboratories Listed and are designed to house electrical controls, terminals, and instruments.



Electrical enclosure sizes are not universal, but most manufacturers follow common size families. This guide explains typical wall-mount and floor-standing dimensions, how to read catalog ...

Contact Us

For more information, pricing, or custom solutions, please contact us:

Website: <https://www.samastersbaseball.co.za>

Email: sales@samastersbaseball.co.za

Phone: +27 63 874 2095

Address: 15 Innovation Drive, Technopark, Stellenbosch, 7600, South Africa

This document is for informational purposes only. Specifications subject to change without notice.

