

## Dimensions of cable trays in the China-Africa tunnel



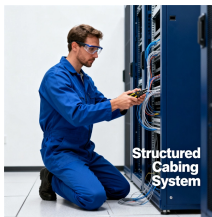
## Dimensions of cable trays in the China-Africa tunnel



When fitting cable trays and their accessories, the products are cut on site to create changes of direction, adjust sections, etc. Damage can also occur during handling; as a result, both the ...



Cable tray must be supported on spans shorter than or equal to the length of the tray. Note: Perforated slot dimensions and patterns may vary depending on tray size and type.



We will first explain standard cable tray dimensions used across the industry, then examine how dimensions vary by tray type, and finally show how to calculate and select the correct ...



Many electrical systems employ cable trays. They route cables safely & efficiently. NEC defines minimum cable tray size & electrical installation ...



Cable tray systems offer unsurpassed reliability, resulting in less maintenance and down time—important considerations for all installations and especially for industries such as data ...



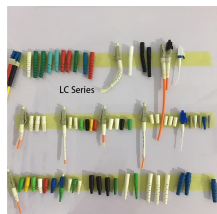
Ceilings, walls, beams, etc., each tunnel has particular installation requirements, and P31 can provide a response with its range of support systems, including threaded rod suspension, brackets for heavy ...



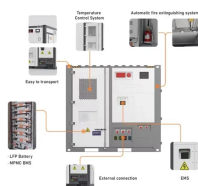
Compared with traditional metal cable trays, polymer cable trays have a much ...



Compared with traditional metal cable trays, polymer cable trays have a much lower density and significantly reduced weight, generally only 1/3 - 1/4 of that of steel cable trays of the same specification.



Our cable tray systems are designed to meet your project requirements, ensuring seamless installation and reliable cable support. Explore the advantages of each to make an informed decision for your ...



We manufacture a wide range of products capable of providing the characteristics which respond to the proposed application, along with quality of assembly, speed of installation, and cost-saving cable trays.



We will first explain standard cable tray dimensions used across the industry, then examine how dimensions vary by tray type, and finally show how to ...



Specifies requirements for metal cable trays and associated fittings designed for use in accordance with the rules of Canadian Electrical Code, Part I and the National Electrical Code®



ICMS cable tray system including Fittings and accessories is manufactured With return flange in a standard length of 2.44Mtr and 3 Mtr, according to the following Specifications and standards:



For the installation of a rigid cable system in a cable tunnel, all steelwork and cleats shall be design so that it accommodates the largest cable which is likely to be ...

## Contact Us

For more information, pricing, or custom solutions, please contact us:

Website: <https://www.samastersbaseball.co.za>

Email: [sales@samastersbaseball.co.za](mailto:sales@samastersbaseball.co.za)

Phone: +27 63 874 2095

Address: 15 Innovation Drive, Technopark, Stellenbosch, 7600, South Africa

This document is for informational purposes only. Specifications subject to change without notice.

