

Diameter of butterfly-shaped optical cable wire



Overview

Butterfly flat drop cable uses special low-bend-sensitivity fiber to provide high bandwidth and excellent communication transmission, it's very suitable for indoor cabling, end users directly cabling, and access network. Standard carton size : 34*22*15 cm; 44*34*24 cm ;. Low Smoke Zero Halogen Jacket: Provides excellent life-safety value by producing minimal smoke and no dangerous halogen gases when burned, making it perfect for indoor installations. Steel Butterfly: Gives excellent protection while increasing mechanical performance to ensure dependability in Fiber. oth indoor and outdoor use. We have a wide range of indoor and outdoor fibre optic distribution, patching and consumer cables, including Plenum, Rise nd communication equipment. A1a. GJXH fiber optic cable is an indoor optical cable specially developed for FTTH (Fiber to the Home). The optical fiber core is located in the center of the cable body, two reinforcing cores are placed on both sides, and the outer layer is enveloped and sheathed to form a cable. FTTH (Fiber to the. Description: FTTH Cable directly connected to their homes, their bandwidth, wavelength and transmission technology type are not restricted. Two parallel strength member are placed at the two sides, then the

cable is completed with black LSZH. Ind-Simplex Bow Type G657A1 Drop Wire Fiber Optic 2 Core type single mode duct drop cable communication wire Telecommunication network The butterfly-shaped optical fiber cable is to place the optical fiber in the center, place two parallel FRP wires on both sides as reinforcing elements, and extrude. Remarks: The Single core optical fiber color is natural. Mechanical and Environmental Performance of the Cable #Test method: IEC 60794-1-E1 -. 5 times the short-term pulling force -.

Diameter of butterfly-shaped optical cable wire



Description: FTTH Cable directly connected to their homes, their bandwidth, wavelength and transmission technology type are not restricted. The optical fiber unit is positioned in the center.



3 Fibre Types & Wavelengths Briticom® cables are available in many specifications, for both indoor and outdoor use. We have a wide range of indoor and outdoor fibre optic distribution, patching and ...



GJYXFHS optical cable is engineered for efficient conduit entry of optical cables, offering robust performance and durability. Its innovative design positions the communication unit at the core, ...



The butterfly-shaped optical fiber cable is to place the optical fiber in the center, place two parallel FRP wires on both sides as reinforcing elements, and extrude a low-smoke halogen-free flame-retardant ...



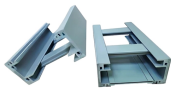
The butterfly-shaped optical fiber cable is to place the optical fiber in the center, place two parallel FRP wires on both sides as reinforcing elements, and extrude a ...



GJXH LSZH Fiber Optic Cable features low smoke zero halogen jacket, steel butterfly protection, G.657A1 fiber, and high mechanical strength for safe, reliable indoor use.



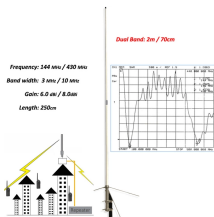
What Is FTTH Drop Cable? FTTH (Fiber to the Home) drop cable is the final-section optical cable that connects the distribution point (fiber distribution box, FDB) to the subscriber's ...



The document outlines the specifications for FTTH Butterfly Optic Cable, detailing cable construction, performance parameters, and mechanical and environmental testing criteria. It includes various ...



Two ends should be packed inside drum, reserve length of cable not less than 1meters. Cable Mark: length, brand Drum Mark: Manufacturer, cable category, No. of drum, length, GW. direction of ...



Explore the details, specifications and video of our Indoor Butterfly GJXH FTTH Fiber Optic Cable, and order high-quality Indoor Butterfly GJXH FTTH Fiber Optic Cable from our factory directly at ...



FTTH indoor cable has a much greater bandwidth to carry data and less susceptible to interference than common indoor fiber cables. With small diameter, water-resistant, soft and ...

Contact Us

For more information, pricing, or custom solutions, please contact us:

Website: <https://www.samastersbaseball.co.za>

Email: sales@samastersbaseball.co.za

Phone: +27 63 874 2095

Address: 15 Innovation Drive, Technopark, Stellenbosch, 7600, South Africa

This document is for informational purposes only. Specifications subject to change without notice.

