

Data Center Full Layer 3 Network Interconnection



Data Center Full Layer 3 Network Interconnection



Layer 3 Extension: Provides routed connectivity between data centers used for segmentation/virtualization and file server backup applications. This may be Layer 3 VPN-based ...



Explore modern DC architecture standards. Compare traditional 3-tier vs. Leaf-Spine (Clos) and discover 2026 reference designs for scalable, high-speed fabrics.



Cisco DCI solutions offer a scalable, flexible platform by supporting Application clustering and VM mobility across Data Centers. They offer flexible connectivity options for LAN and SAN ...



This design guide describes an Arista solution for providing simple, robust, and cost-effective data center interconnection (DCI) that enables layer-2 services to be bridged between multiple sites over existing ...



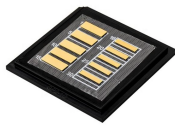
Traditional data centers and campus networks use a 3-tier network architecture, called the hierarchical interconnection network model.



Explore modern DC architecture standards. Compare traditional 3-tier vs. Leaf-Spine (Clos) and discover 2026 reference designs for scalable, high-speed fabrics.



The connection between data center fabrics is referred to as a data center interconnect (DCI). Layer 2 and Layer 3 network segments are extended between fabrics using the same VNI ...



Data center interconnect (DCI) connects multiple facilities through private circuits for disaster recovery, data replication, and workload distribution. Learn the differences between Layer 2 ...



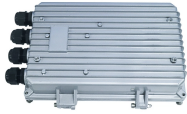
Consequently, the Adaptive Cloud Fabric can be deployed within a single data center or geographically distributed to seamlessly interconnect dozens of data centers over any existing Layer 2 or Layer 3 ...



The modern answer for workload mobility is EVPN multi-site with VXLAN DCI (Data Center Interconnect) using dedicated border gateways. Workloads move between DCs, but at Layer 3 with proper BGP ...



The example shows a layer 3 interconnect configuration, where the border leafs filter EVPN prefixes (except type-5) to distribute across DCI links. This configuration ensures that DCI only exchanges ...



BGP EVPN in Datacenter and Layer 3 Data Center Interconnect. This tutorial briefly introduces VXLAN and advantages of using EVPN in Datacenter. This tutorial will cover detailed information on: BGP ...

Contact Us

For more information, pricing, or custom solutions, please contact us:

Website: <https://www.samastersbaseball.co.za>

Email: sales@samastersbaseball.co.za

Phone: +27 63 874 2095

Address: 15 Innovation Drive, Technopark, Stellenbosch, 7600, South Africa

This document is for informational purposes only. Specifications subject to change without notice.

