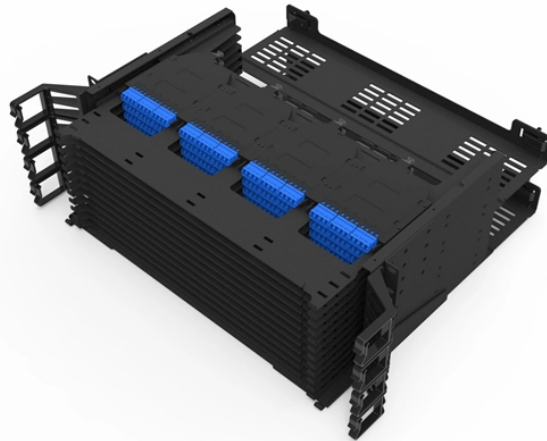


Correct Installation Method of Optical Module



Overview

This guide provides detailed, professional steps to ensure you perform these tasks correctly every time, minimizing downtime and maximizing your hardware investment. We'll also explore the advantages of using reliable brands like LINK-PP for consistent performance. Small Form-factor Pluggable modules (SFP module) are the workhorses of modern network connectivity, enabling flexible fiber optic or copper links between switches, routers, firewalls, and servers. Whether you're upgrading bandwidth, replacing a faulty unit, or reconfiguring your topology, knowing. Or it works briefly, then drops randomly. The good news?

These mistakes are easy to avoid once you know what to watch for. It's essential to understand how to properly install and configure an SFP.

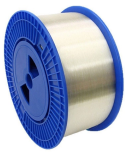
Correct Installation Method of Optical Module



SFP transceivers allow for the transmission and reception of optical signals in networking devices such as switches, routers, and media converters. In this guide, we will walk you through the ...



In this step-by-step guide, we will walk you through the process of installing and removing SFP transceiver modules to ensure proper handling and avoid damage to the module or network ...



Learn to install optical transceiver correctly. Avoid 5 mistakes causing link failure, signal loss, and permanent damage. Covers SFP and QSFP modules.



□□ Optical Transceiver: Proper Usage & Safety Guidelines □□ Step-by-Step Installation Procedure Static Protection Always wear an ESD wrist strap when handling transceivers Store ...



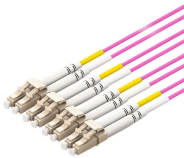
Install optical modules safely with ESD protection, proper handling, and dust control. Follow these steps to avoid damage and ensure network reliability.



The QSFP-DD, QSFP, and SFP transceiver modules are hot-swappable and connect the electrical circuitry of the system with an optical external network. The following figure shows the QSFP-DD ...



SFP and other optical modules are key components of any fibre optic network. They enable high-speed connections between active equipment and allow system scalability without the ...



Therefore, this article introduces you to a small guide to the installation and removal of optical modules to ensure that you can operate them correctly and avoid unnecessary damage or ...



To extend the service life of the optical transceiver and prevent link failure, it is essential to follow the proper SFP installation and removal procedures as outlined in the tutorials above.



SFP modules are an indispensable part of the optical fiber link. Although the installation and removal of SFP modules are very simple, when using modules, you must follow the user manual for correct ...

Contact Us

For more information, pricing, or custom solutions, please contact us:

Website: <https://www.samastersbaseball.co.za>

Email: sales@samastersbaseball.co.za

Phone: +27 63 874 2095

Address: 15 Innovation Drive, Technopark, Stellenbosch, 7600, South Africa

This document is for informational purposes only. Specifications subject to change without notice.

