

Core switch port has no IP address



Overview

First, use the mac address-table to map the device's MAC address to its physical port. Prerequisite: The switch must have an IP address configured in the same VLAN as the devices. Add the following config to your trunk port: switchport trunk encap dot1x switchport mode trunk 01-22-2019 05:05 AM 01-22-2019 05:23 AM The diagram only shows one connection from the edge switch to the core switch, so when one switch goes down you are always going to isolate at least one switch. If. Make sure both CDP and LLDP are enabled and try the following command: Solved: show mac address-table output and and trunk port - Cisco Community CDP and LLDP are enabled and shows nothing on this port. This is our core switch and i doubt if there is any dump switch connected with core. But i will. To configure an IP Address on a switch interface, first, we must change the interface from a layer 2 interface to a layer 3 interface. The Cisco Command-Line Interface (CLI) is a core tool used by network administrators to configure and manage Cisco devices such as routers and switches. It may just be that documentation is being created. This blog shows how to do so in a Cisco environment trying to find the.

Core switch port has no IP address



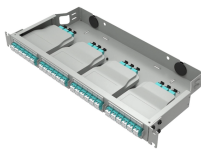
Here's the Cisco CLI Switch Command cheat sheet you need for configuring and managing Cisco switches. The Cisco Command-Line Interface (CLI) is a core tool used by network ...



For example, if the other end is a dumb switch with nothing else, you can't see what is there. If the other device is a desktop that is plugged in but not running, then link will be up for wake ...



There may be a time you'll need to track down which port has a certain device plugged into it. Here's how to find which switch port via an IP address.



Learn how to map an IP address to a physical port on a Cisco switch using MAC and ARP tables, or a DHCP server. Step-by-step tutorial for network troubleshooting.



Struggling with Cisco switch configuration? Learn console access, hostname, IP, VLANs, PoE, SSH, and saving configs — all in one clear, step-by-step guide based on official Cisco practices ...



Certain versions of IOS require the command of just "switchport" on the interface to force it to operate as a layer 2 port. Try giving just the "switchport" command with no other parameters, it will probably ...



To configure an IP Address on a switch interface, first, we must change the interface from a layer 2 interface to a layer 3 interface. A point to note is that to provide an IP Address to a switch ...



Here's the Cisco CLI Switch Command cheat sheet you need for ...



I suggest you create SVIs on the core switches, establish port-channels between the core switches and create a Layer3 mesh between them advertising routes via IGP.



Usually the command "no switchport" means that it is a layer 3 interface. Then on top of that you might see no ip address which will mean it just doesn't have an ip address on that layer 3 ...



That port can only be used for L3 communication, ie. routing. A VLAN defined on that port is a subinterface without MAC-based forwarding to other ports using the same VLAN ID.

Contact Us

For more information, pricing, or custom solutions, please contact us:

Website: <https://www.samastersbaseball.co.za>

Email: sales@samastersbaseball.co.za

Phone: +27 63 874 2095

Address: 15 Innovation Drive, Technopark, Stellenbosch, 7600, South Africa

This document is for informational purposes only. Specifications subject to change without notice.

