

## Connection method for four wires in a three-level distribution box



## Connection method for four wires in a three-level distribution box



Connection method: Each switch takes a wire from the incoming point and connects it to the incoming end of the switch, or uses parallel connection to reduce the difficulty of wiring.



Find out how to properly wire an electrical panel box with a comprehensive diagram and step-by-step instructions.



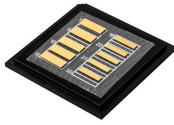
Boxes must not be attached to the ceiling-support wires of suspended ceilings, but additional independent support wires may be added for the support of boxes, raceways and cables.



The current NEC code requires a 4-wire feeder so there is a separate grounding connector between the Main and Sub panels. The neutral and ground are not bonded in the subpanel.



High Leg Delta (also known as Power Leg, Wild Leg or Bastard Leg) is a three phase, four wire power distribution system used in commercial buildings in North America especially in rural and older ...



Learn how to safely and correctly wire a 4-wire electrical system to a 3-wire setup with this step-by-step guide. Understand the potential risks and necessary precautions to ensure the proper functioning of ...



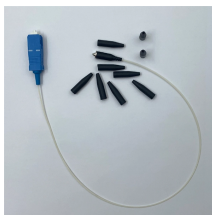
The current NEC code requires a 4-wire feeder so there is a separate grounding ...



Master the safe installation of 4-wire high-voltage receptacles. Detailed guide on identifying conductors, terminal connections, and verifying 240V circuits.



Hey, in this article, we are going to see different types of sub-panels (120V, 240V, etc) wiring diagrams, and connections with the Main Panel. A main panel and a sub-panel are both ...



Learn how to install a distribution box safely and correctly. Covers wiring, placement, standards, and expert tips for a compliant setup.



In this video, we'll walk you through the process of wiring a home distribution box with a detailed connection diagram.

## Contact Us

For more information, pricing, or custom solutions, please contact us:

Website: <https://www.samastersbaseball.co.za>

Email: [sales@samastersbaseball.co.za](mailto:sales@samastersbaseball.co.za)

Phone: +27 63 874 2095

Address: 15 Innovation Drive, Technopark, Stellenbosch, 7600, South Africa

This document is for informational purposes only. Specifications subject to change without notice.

