

# Configuring a multimode optical module with single-mode fiber



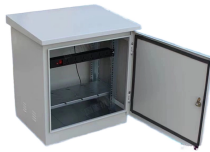
## Overview

Connecting a multi-mode SFP to single-mode fiber creates a major signal mismatch. A small portion of the transmitted light gets captured. This leads to high attenuation and frequent link drops. I suggest you avoid such setups. Let's analyze the differences between multimode and single-mode fiber to understand why networks require fiber mode conversion and. They are typically categorized into two main types: multimode fiber (MMF) and single-mode fiber (SMF), distinguished by their transmission modes. An essential difference between them lies in the transmission distance they can accommodate. Fiber mode conversion becomes necessary when optimizing.

## Configuring a multimode optical module with single-mode fiber



Learn how single-mode and multi-mode transceivers differ, compatibility rules, testing tips, and best practices for reliable fiber deployments.



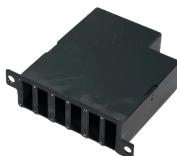
Technically speaking, Single Mode modules provide the superior link budget required for 400G/800G stability, while Multimode modules remain a cost-sensitive choice for legacy, short-reach ...



Discover the complete guide on converting multimode to single-mode fiber in communication networks. Understand the differences and learn the necessary steps.



Converting multimode fiber to single-mode fiber can improve network performance and future-proof infrastructure. This guide will walk you through the methods, challenges, and best ...



In different cabling environments, optical fiber communication may require multimode to single-mode conversion or single-mode to multimode conversion. But the most typical application is ...



While it is technically possible to use a multimode SFP with single-mode fiber, it is fraught with challenges and potential performance issues. The mismatch in core sizes, potential signal loss, and ...



Let's analyze the differences between multimode and single-mode fiber to understand why networks require fiber mode conversion and how to convert multimode to single-mode fiber and vice versa.



Therefore, the link between buildings from the LAN to the wide-area network (WAN) needs to use single-mode fiber to extend the transmission distance. This article introduces the fiber ...



Fiber mode conversion becomes necessary to establish connectivity between multimode and single-mode fiber cables, or to interface a multimode fiber cable with a device designed to ...



Convert fiber between multimode and single mode using smart methods for better speed, longer distance, and reliable network performance.

## Contact Us

For more information, pricing, or custom solutions, please contact us:

Website: <https://www.samastersbaseball.co.za>

Email: [sales@samastersbaseball.co.za](mailto:sales@samastersbaseball.co.za)

Phone: +27 63 874 2095

Address: 15 Innovation Drive, Technopark, Stellenbosch, 7600, South Africa

This document is for informational purposes only. Specifications subject to change without notice.

