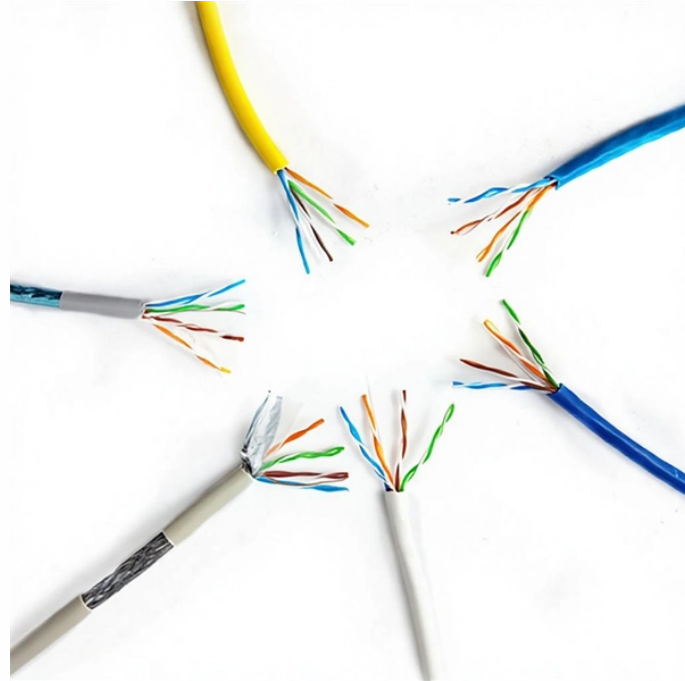


# Concealed Inspection of Outdoor Distribution Boxes



## Overview

This article provides a guide to achieving visual concealment through aesthetic, practical, and compliant methods. Any solution implemented must prioritize safety above all else, ensuring that immediate access for utility personnel and emergency responders is never compromised. □□ Quick Answer: An outdoor electrical junction box is a weatherproof enclosure where electrical wires connect or split, required by code to protect connections from moisture, provide safe access for maintenance, and prevent electrical hazards in exterior applications. What is an Outdoor Electrical. Exterior electrical boxes, whether they are utility meters, service disconnects, or junction boxes, often present a significant aesthetic challenge to a home's curb appeal. These necessary components, mandated by building codes and utility requirements, are frequently mounted in highly visible. 11. The term “Qualified Person (QP)”, as used in this section, refers to “Qualified Person, Electrical”. Junction Box Ancillary items (Bolt, Nut, TERMINALS, ETC. 165 further requires that all below ground facilities and equipment have a Detailed Inspection at a minimum of every three (3) years and above ground structures and equipment receive a Detailed Inspection at a minimum of every f. (a) Covered.

## Concealed Inspection of Outdoor Distribution Boxes



Conductors entering boxes, cabinets, or fittings shall be protected from abrasion, and openings through which conductors enter shall be effectively closed. Unused openings in cabinets, boxes, and fittings ...



Temporary electrical distribution systems and devices shall be checked and found acceptable for polarity, ground continuity, and ground resistance before initial use and before use after...



Outdoor electrical junction boxes require periodic inspection and minimal maintenance to ensure continued weatherproof protection and safe operation. Annually (or after severe weather ...



This content provides you with a sample junction box inspection and test plan. You need to modify this junction box ITP to meet your specifications.



You should never cover a box with drywall, paneling, or any part of the building. This rule helps you inspect, repair, or replace wires without damaging your home.



Figure 3.16 below shows an example of an incorrect pull box installation where the pull boxes are not placed in a flat area, the area was not at final grade prior to installations, and the pull boxes are not ...



The desire to conceal these boxes safely and effectively is a common goal for many homeowners undertaking exterior improvements. This article provides a guide to achieving visual ...



(1) Conductors entering boxes, cabinets, or fittings. Conductors entering boxes, cabinets, or fittings shall be protected from abrasion, and openings through which conductors enter shall be effectively closed.



Electrical Distribution Box (DB) Inspection Checklist - Free download as PDF File (.pdf), Text File (.txt) or read online for free.



Circuit Patrol is predominantly a “drive-by” inspection for all overhead facilities, attachments and equipment; however, Circuit Patrol and Detailed Inspections may be performed by air at the ...

## Contact Us

For more information, pricing, or custom solutions, please contact us:

Website: <https://www.samastersbaseball.co.za>

Email: [sales@samastersbaseball.co.za](mailto:sales@samastersbaseball.co.za)

Phone: +27 63 874 2095

Address: 15 Innovation Drive, Technopark, Stellenbosch, 7600, South Africa

This document is for informational purposes only. Specifications subject to change without notice.

