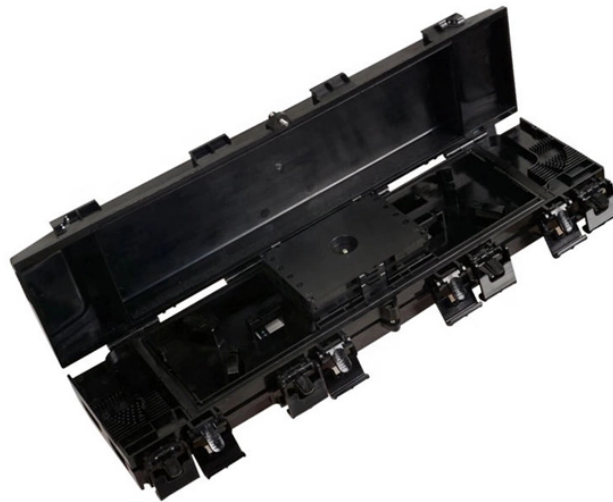


Comparison of 4-core fiber optic splice boxes and their cost-effectiveness



Overview

Fiber optic splice closures are categorized by design, installation method, and environmental resilience. Below is a comparative analysis of the two primary types: Horizontal (In-Line) Splice Closures Rectangular, flat-profile enclosures with side-by-side fiber. CommScope addresses these challenges with a comprehensive family of fiber splice closures that prioritize essential criteria: reliability, installability, flexibility, and speed of deployment. Trunk and Feeder Network Solutions: These closures are designed for robust performance in the backbone of. In fiber optic network deployments, splice closures serve as indispensable guardians of fiber connections, shielding splices from environmental hazards while enabling seamless network scalability. From weather to bullets, the iron and steel construction requires no additional protective covering. Furnished with four plugged cable ports (2 aluminum and 2 plastic) for either All-Dielectric Self-Supporting (ADSS) or. The FSB series of indoor wall mount enclosures are designed for centralized splice-only applications.

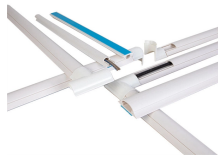
Comparison of 4-core fiber optic splice boxes and their cost-effectiv



With an internal capacity to store approximately 25 feet of buffer tube, the closure is more cost-effective, eliminating the need for an external coil storage bracket (with exception to stainless steel tube optical ...



Explore reliable optical fiber splice closures for network deployment. Our closures prioritize reliability, installability, and flexibility.



This 4 strand optical fiber distribution box is used for the fusion splicing, splitting, wiring transmission and other functions of the optical transmission terminal. It can effectively terminate, protect and manage ...



Discover a wide range of high-quality Fiber Optic Products, including termination boxes, splice enclosures, patch panels, and PLC splitters. Perfect for FTTH, telecom, and enterprise networks.



Choosing the correct Fiber Optic splice box is not merely about housing splices; it's about protecting a critical network asset. The selection process must balance environmental factors, capacity, and ...



Discover how to select the ideal fiber optic splice closure for FTTx, aerial, and underground networks. Compare horizontal vs. vertical types, key ...



The WSB-48FI unit is a wall-mountable splice box for fiber optic cable (i.e. outside plant cable and inbuilding cable (Optistrip™)). The unit will accommodate four 12-inch splice organizer trays (Corning ...



Discover how to select the ideal fiber optic splice closure for FTTx, aerial, and underground networks. Compare horizontal vs. vertical types, key factors (IP68 rating, cable ...



FBR-11605 Fiber-Optic Distribution Box, 4-Core is a high quality product by Bud Industries used for electronic enclosure applications.



Fiber splice boxes from Amphenol Network Solutions are designed for splice-only applications. They are suited for optical cable splice collection points for DAS, MTU and MDU.

Contact Us

For more information, pricing, or custom solutions, please contact us:

Website: <https://www.samastersbaseball.co.za>

Email: sales@samastersbaseball.co.za

Phone: +27 63 874 2095

Address: 15 Innovation Drive, Technopark, Stellenbosch, 7600, South Africa

This document is for informational purposes only. Specifications subject to change without notice.

