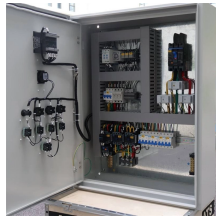


Columbia 304 Stainless Steel Cable Tray Manufacturer



Columbia 304 Stainless Steel Cable Tray Manufacturer



Stainless steel cable trays resist corrosion, rust, chemicals, UV, water, high temperature and any other severe conditions. Easy cutting and drilling with standard tools.



A stainless steel with 304 or 316 of nickel and chromium is the best for cable tray applications. When installing cable trays, KDM stainless steel cable trays are the most common and most negotiable in ...



Our cable trays are made of first-class stainless steel (AISI 316 and AISI 304) that prevents corrosion and ensures a good level of resistance. Cable trays from SILTEC are available with a length of 3000 ...



Choose from our selection of cable trays, including over 850 products in a wide range of styles and sizes. Same and Next Day Delivery.



Superfab Inc uses premium-grade stainless steel and advanced manufacturing ...



Steel Cable Tray Steel Cable Tray systems are Certified CSA Cable Tray, UL listed, and NEMA certified and are available in the following material types 316 Stainless Steel Cable Tray, 304 Stainless Steel ...



Durable Cope Trof cable trays in 304/316 stainless steel for secure, efficient routing.



Cablofil® wire mesh cable tray concept based upon performance, safety and economy, three qualities which make Cablofil® wire mesh cable tray system preferred by installers.



Superfab Inc uses premium-grade stainless steel and advanced manufacturing techniques to produce durable, corrosion-resistant cable trays that meet the highest quality standards. We offer a wide ...



Organization of Your CablesCost-Effectiveness in The Cable ManagementDurability in The Cable ManagementCable Management from SiltecCable tray systems are designed with durability in mind and can last a lifetime if properly maintained. They are made of high-quality materials such as steel or aluminum which makes them resistant to corrosion and wear-and-tear over time. Additionally, once installed, they have minimal maintenance requirements which can help reduce costs associated...See more on siltec MP Husky



Constructed from high-quality 304 stainless steel, these trays provide exceptional durability and resistance to corrosion. Designed for networking, AV systems, fiber optics, industrial wiring, and ...



We would like to show you a description here but the site won't allow us.

Contact Us

For more information, pricing, or custom solutions, please contact us:

Website: <https://www.samastersbaseball.co.za>

Email: sales@samastersbaseball.co.za

Phone: +27 63 874 2095

Address: 15 Innovation Drive, Technopark, Stellenbosch, 7600, South Africa

This document is for informational purposes only. Specifications subject to change without notice.

