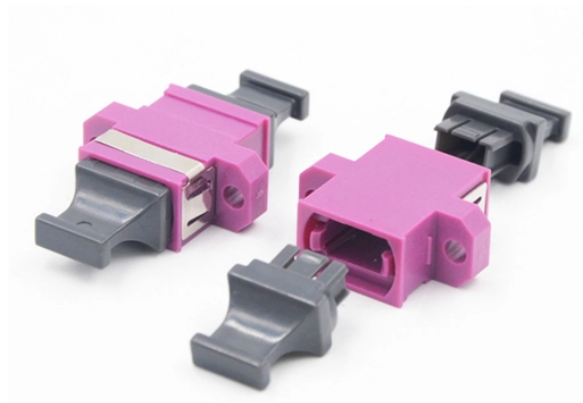


Chilean Bending-Insensitive Fiber ADSS





G657A1 is a bend-insensitive fiber, often utilized in tight spaces such as inside buildings or data centers. Its tiny bend radius allows cables to hug sharp corners with minimal signal ...



In addition, as shown in figure 6, total internal reflection PCF has the same excellent bending resistance due to its cladding structure (periodic arrangement of cladding air holes) similar to that of hole ...



Let's examine the design of bend-insensitive multimode fiber (which we will usually call by its acronym BI MMF) that shows the technique. In regular graded index multimode fiber, there are many modes (or ...



ADSS Cables are designed for outdoor installation along power lines, railway or telecommunication cables on poles or lattice towers. The cable is self-supporting and require no messenger or lashing ...



AFL-ADSS® (All-Dielectric Self-Supporting) cable is ideal for installation in distribution as well as transmission environments, even when live-line installations are required.



AFL-ADSS® (All-Dielectric Self-Supporting) cable is ideal for installation in distribution as well as transmission environments, even when live-line installations are required.



This specification covers the construction all dielectric self-supporting Optical Fiber Cable (ADSS) properties for outdoor application. The optical fiber cable contains 24 cores (6cores/tube) single ...

Contact Us

For more information, pricing, or custom solutions, please contact us:

Website: <https://www.samastersbaseball.co.za>

Email: sales@samastersbaseball.co.za

Phone: +27 63 874 2095

Address: 15 Innovation Drive, Technopark, Stellenbosch, 7600, South Africa

This document is for informational purposes only. Specifications subject to change without notice.

