

Central Asian Five Countries Terminal Box 4-core



Overview

JFFTB-04-A1 terminal box is designed for FTTx project, desk mounted or wall mounted. It can function optical fiber splicing, storage and patch cord connection. The top cover is fixed on bottom by buckle, easy to. Applicable to optical fiber termination in FTTx system, mainly used for the direct connection and branch connection between indoor cables. KEXINT can deliver FTTH Indoor Outdoor Waterproof IP68 16 Cores Fiber Optic Distribution Box the best quality at low prices. This box is suitable for splicing and managing fiber cables in residential buildings, providing a secure, accessible solution for cable termination. With a Pre-Terminated Outlet kit (PTO) is a product configured for speed and ease of installation in Fiber to the Home (FTTH) and Fiber to the Business (FTTB) deployments. It provides for quick and easy deployments with increased reliability which allow for fast service turn-up, improved network reach and. Once receive your question, the supplier will answer you as soon as possible. Enter between 20 to 4,000 characters. Click here to contact the supplier through an inquiry.

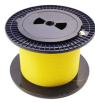
Central Asian Five Countries Terminal Box 4-core



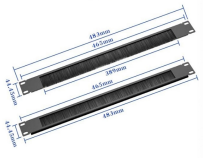
4 Core FTTH/FTTX Fiber Optic Terminal Box, Find Details and Price about Distribution Box Cabinet from 4 Core FTTH/FTTX Fiber Optic Terminal Box - Takfly Communications Co., Ltd.



Our 4 Core Fiber Termination Box is engineered for effortless splicing, thanks to its innovative flip-up distribution panel. This unique feature enables installers to ...




FTTH 2 4 core fiber optical terminal box with wall mounting accessories is a new generation product for fiber to the home (FTTH). The box is light and compact; it is especially for connecting and protection ...



The optical fiber distribution box is an interface device used to connect the backbone optical cable and the distribution optical cable outdoors, in the corridor or indoors.



The splitter termination box is suitable for fiber terminal point to complete connection, distribution and scheduling between perimeter fiber cables and terminal equipment, especially suitable for mini ...

	<p>ADV7007 4 core Fiber FTTH Terminal Box Can hold 1x4 PLC splitter Up to 4 drop cable Up to 4 SC adaptors 1 inlet port (for cables with max diameter 8mm), 4 outlet ports Wall mounting. Protection ...</p>
	<p>With a capacity of up to 4 cores, it supports various adapter types, including SC simplex and LC duplex, making it adaptable for different network setups. The durable steel construction and ...</p>
	<p>Drop cable with 1,2 or 4 fibers is design and integration with low curvature radius G657A2 . Drop cable is suitable for indoor or outdoor installation.</p>
	<p>4 Core FTTH ODF Terminal Box is Small size, light weight for easy installation compact body. FC, SC, LC adapter type. Fiber can get in from bottom or side.</p>
	<p>4 Core FTTH ODF Terminal Box is Small size, light weight for easy installation ...</p>
	<p>DESCRIPTION JFFTB-04-A1 terminal box is designed for FTTx project, desk mounted or wall mounted. It can function optical fiber splicing, storage and patch cord connection.</p>



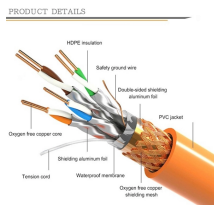
With a capacity of up to 4 cores, it supports various adapter types, ...



The optical fiber distribution box is an interface device used to connect the ...



FTTH 2 4 core fiber optical terminal box with wall mounting accessories is a new ...



Our 4 Core Fiber Termination Box is engineered for effortless splicing, thanks to its innovative flip-up distribution panel. This unique feature enables installers to splice cables with ease, streamlining the ...

Contact Us

For more information, pricing, or custom solutions, please contact us:

Website: <https://www.samastersbaseball.co.za>

Email: sales@samastersbaseball.co.za

Phone: +27 63 874 2095

Address: 15 Innovation Drive, Technopark, Stellenbosch, 7600, South Africa

This document is for informational purposes only. Specifications subject to change without notice.

