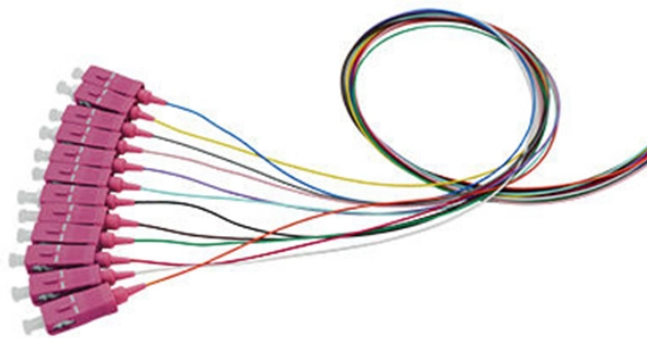


Can cables in cable trays be cut



Overview

A tray cutter is a specialized tool designed for cutting multiple cables simultaneously, typically within a cable tray. Is it legal to cut out portions of cable tray side rail ?

Not open for further replies. They'd remove approximately 12" of the rail at several locations along the tray to. However, every installation is unique, and sometimes it becomes necessary to cut a cable tray to fit specific spaces or to connect different sections. Inadequate cuts can lead to. This guide covers the critical steps, from selecting the right electrical cable tray and performing accurate cable fill calculations to managing a safe cable pull through and ensuring all bonding and grounding requirements are met. Cable tray is the preferred wiring method for industrial facilities, data centers, and large commercial buildings where routing dozens or. How to cut Oglænd System Support Channels, Cable Ladders and Cable Trays. Oglænd System manufacture and deliver Multidiscipline modular bolted support systems, cable trays, cable ladders and accessories for complete installation and containment of Instrument, Electrical, Telecom, HVAC and Piping.

Can cables in cable trays be cut



Reduce the loading When anchoring supports for cable tray, it is extremely important to avoid cutting or drilling into structural building components, such as I-beams, unless approval has been given by the ...



Learn about trail conditions and closures, the weather forecast, and drinking water availability inside the canyon. What's Open Today? Here's an updated list of South Rim hours of operation for visitor ...



The electricians want to "notch" the cable tray side rail so wireways can be attached to it and transition the cabling into it. They'd remove approximately 12" of the rail at several locations ...



CAN definition: to be able to; have the ability, power, or skill to. See examples of can used in a sentence.



The use of can to ask or grant permission has been common since the 19th century and is well established, although some feel may is more appropriate in formal contexts. May is relatively rare in ...



Hilti's cordless bandsaw is an appropriate tool for cutting low height, thin metal products such as cable ladders and trays and support channels. Accurate cutting is achieved with low noise and debris.



Canva is a free-to-use online graphic design tool. Use it to create social media posts, presentations, posters, videos, logos and more.



Learn how to cut and bend 10 ft. mesh cable trays for corners in commercial offices. Improve structured cabling for PoE, fiber, power, and control cables with...



Used to indicate possession of a specified power, right, or privilege. The president can veto congressional bills.



Can is the most used modal verb in English, yet most English learners don't still know all its usages and when not to use it. This detailed post explains everything about the modal can.



This guide covers the critical steps, from selecting the right electrical cable tray and performing accurate cable fill calculations to managing a safe cable pull through and ensuring all bonding and grounding ...



This guide covers the cable tray types and their appropriate applications, the fill rules for each configuration, ampacity derating requirements, separation of power and signal cables, and the ...



You use can to indicate that someone has the ability or opportunity to do something. Don't worry yourself about me, I can take care of myself. I can't give you details because I don't actually have any details. ...



Can is usually used in standard spoken English when asking for permission. It is acceptable in most forms of written English, although in very formal writing, such as official instructions, may is often ...



Do you use “can” and “could” correctly in English? Join me and learn how to use these two important modal verbs, in terms of grammar, vocabulary, and pronunciation.



Cut each wire with one clean cut - eliminating any grinding or touch-up. Cut the bottom wires first, in order as shown, from the underside of the tray. Rest the lower jaw of the cutters against the cradle ...



This guide aims to provide clear, step-by-step instructions and safety tips to ensure you can cut cable trays efficiently and safely, maintaining your system's integrity and compliance with ...



With a tray cutter, you can significantly reduce cutting time as it allows you to cut multiple cables simultaneously. This is particularly advantageous when dealing with large installations or cable ...



Learn how to manage cables in cable trays effectively with our comprehensive guide for cable classification, protection, and installation to ensure electrical system safety and efficiency.

Contact Us

For more information, pricing, or custom solutions, please contact us:

Website: <https://www.samastersbaseball.co.za>

Email: sales@samastersbaseball.co.za

Phone: +27 63 874 2095

Address: 15 Innovation Drive, Technopark, Stellenbosch, 7600, South Africa

This document is for informational purposes only. Specifications subject to change without notice.

