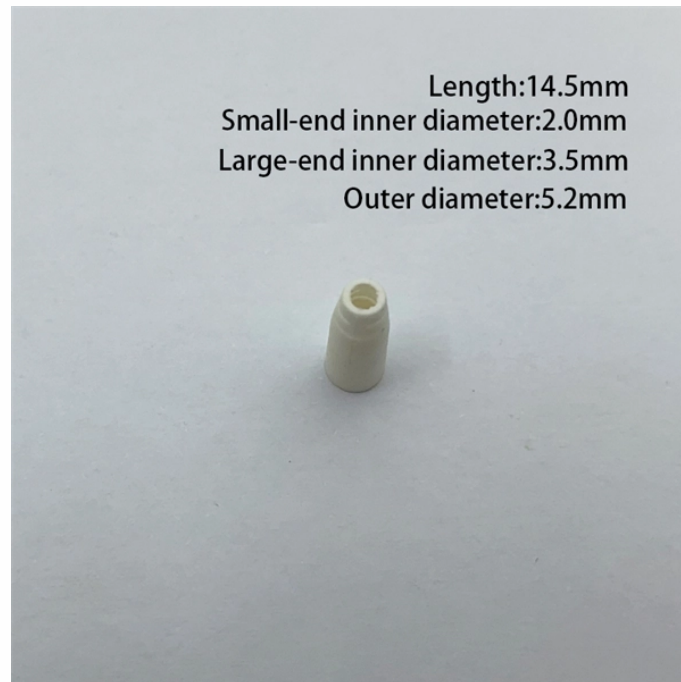


## Cable tray hanger specifications and corresponding dimensions



## Cable tray hanger specifications and corresponding dimensions



In accordance with its continuous improvement policy, Legrand reserves the right to change the specifications and illustrations without notice. All illustrations, descriptions and technical information ...



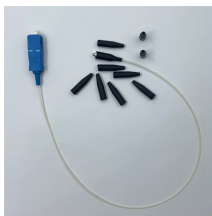
Explore standard sizes by tray type, understand width and depth limits, and see how to calculate and choose compliant cable tray sizes for real projects.



Explore Atkore's cable hangers and holders for efficient cable management solutions, ensuring secure and organized installations in various applications.



Straight section ladder tray shall be prefabricated structures made from fiberglass reinforced plastic, consisting of two longitudinal members (side rails) connected by transverse rungs, meeting all the ...



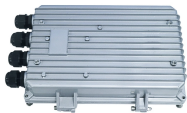
Cable tray length is selected based on the load to be supported, the distance between the supports (also referred to as the span), and handling and installation constraints.



Our Snap Track single hanger brackets & channel hangers are used for overhead or beam mounting when installed with a beam clamp. Contact us!



Hubbell's NEXTFRAME® Ladder Tray is the effective and widely used cable runway that supports and delivers bundles of cable between cabinets, racks, and closets, along walls, and suspended from ...



Fitting and accessories. with the same or different width of the cable run. All fittings are available in sizes and types corresponding to the straight cable tray sections. These fittings are including: elbow, ...



Explore standard sizes by tray type, understand width and depth limits, and see how to calculate and choose compliant cable tray sizes for real projects.



Many electrical systems employ cable trays. They route cables safely & efficiently. NEC defines minimum cable tray size & electrical installation ...



The loading table below gives the recommended maximum load for each size of tray overhead hanger when used with Vantrunk cable tray and with a uniformly distributed load (UDL) onto the tray ...



Description: This product category covers metal cable trays and metal cable tray systems intended for field assembly and for use in accordance with Article 392 of NFPA 70.

## Contact Us

For more information, pricing, or custom solutions, please contact us:

Website: <https://www.samastersbaseball.co.za>

Email: [sales@samastersbaseball.co.za](mailto:sales@samastersbaseball.co.za)

Phone: +27 63 874 2095

Address: 15 Innovation Drive, Technopark, Stellenbosch, 7600, South Africa

This document is for informational purposes only. Specifications subject to change without notice.

