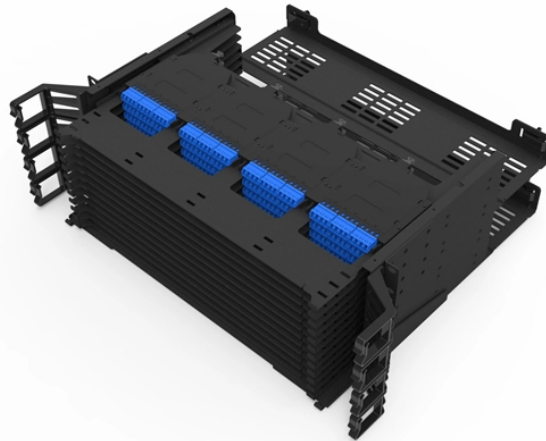


Cable fixing at the distribution box opening



Overview

What Is a Distribution Box?

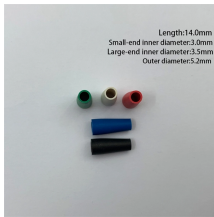
A distribution box, also known as a power distribution unit, is a critical component in any electrical system. It is the control center fo.



Cable fixing at the distribution box opening



Fix panels with the base channel provided on the trench with the help of foundation bolts or by welding. The panels with top cable entry i.e., without trench can be fixed by grouting panel to pockets ...



General Technical Particulars for LT Distribution Boxes : - The L.T. Distribution Boxes should be of the dimensions as per the drawing & details in the table furnished.



Box fill violations are among the most common inspection failures, so careful calculation is a must. Too many times it is discovered that there are too many conductors without any grace ...



Abstract: The design, installation, and protection of wire and cable systems in substations are covered in this guide, with the objective of minimizing cable failures and their consequences.



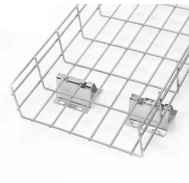
Box installation: Place the cable distribution box on the installation surface, align with the expansion bolt position, and tighten the screw firmly. Ensure that the box is level and stable, without ...



Learn how to install a distribution box safely and correctly. Covers wiring, placement, standards, and expert tips for a compliant setup.



If there is more than one cable in an electrical box, use pigtail wires to connect the outlet's terminal, or ground screw, to the circuit wires. Metal electrical boxes must be connected to ...



Connecting wires to your home distribution box? See how electricians do it professionally! From selecting the right wire gauge to safely connecting the main ...



The document is intended to help electrical engineers and supervisors install distribution boards for electrical projects according to contract requirements and specifications.



Be sure that the power distribution box has sufficient power provided to it. Long cable runs can result in a voltage drop, which can be solved by using a heavy gauge wire. Check wires/DIN terminal clasps ...

Contact Us

For more information, pricing, or custom solutions, please contact us:

Website: <https://www.samastersbaseball.co.za>

Email: sales@samastersbaseball.co.za

Phone: +27 63 874 2095

Address: 15 Innovation Drive, Technopark, Stellenbosch, 7600, South Africa

This document is for informational purposes only. Specifications subject to change without notice.

