

Cable Tray Hydrate Algorithm



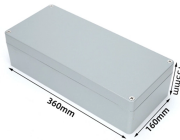
Cable Tray Hydrate Algorithm



SmartPlant Electrical by Hexagon PPM designed for the electrical design of large-scale industrial projects. It offers advanced capabilities for cable routing, including automated cable routing, cable ...



The Cable Tray Institute is making available the current edition of this practical guide for the proper installation of aluminum or steel cable tray systems. These guidelines will be useful to engineers, ...



Ensure your cable runs meet NEC safety standards with our Cable Tray Fill Calculator. Calculate fill ratios for CAT6, Power, and Fiber cables to prevent overheating and inspection failures.



Our wind certification report provides you with list of acceptable B-Line series cable tray supports, fittings and covers based off of the environmental conditions, cable loading, and type of cable tray in your ...



All components are solidly bonded together in order to achieve a maximum reduction of perturbation effects. Also, all the cables shall be pulled in cable trays or any other type of mechanical and ...



A spread sheet based wiring management program may be used to control the cable fills in the cable tray. While such a system may also be used for controlling conduit fill, large numbers of individual ...



The purpose of this calculation is to document and evaluate the cable tray supports for Indian Point Unit 2. This calculation contains the Plant Area Summary Sheets, walkdown notes, support sketches, ...



Cables will nearly completely fill the cable tray when reaching the 50% cable fill, due to empty space between the surface of the cables. TIA recommends 40% fill ratio. Flextray loads shown in the ...



High-quality ceramic ferrule

These calculations contain an unverified assumption(s) that must be verified later. Yes O No g. n Microfilm and store calculations in RIMS Service Center. Microfilm and destroy. RIMS. SL 26 C-K. P! ...



Cable tray length is selected based on the load to be supported, the distance between the supports (also referred to as the span), and handling and installation constraints.



Some applications may require the cable tray to support the weight of a single, dead object in addition to the cable loads. Specifications typically require this to be applied at the midpoint of the span between ...

Contact Us

For more information, pricing, or custom solutions, please contact us:

Website: <https://www.samastersbaseball.co.za>

Email: sales@samastersbaseball.co.za

Phone: +27 63 874 2095

Address: 15 Innovation Drive, Technopark, Stellenbosch, 7600, South Africa

This document is for informational purposes only. Specifications subject to change without notice.

