

Brick House Electrical Distribution Box



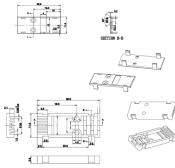
Brick House Electrical Distribution Box



In this article, I will explore the benefits and considerations of using an electrical box for brick, helping you make an informed decision for your home. So let's dive in and discover how this small yet crucial ...



Choosing the right electrical box for brick walls ensures safe wiring, long-lasting protection, and easy upgrades. This guide highlights five reliable options that fit brick construction, ...

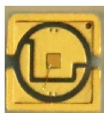


Finding the right electrical box for brick construction means balancing weather resistance, mounting compatibility, and ease of installation. This guide highlights five top options designed to protect ...

Rear of the optical fiber distribution box



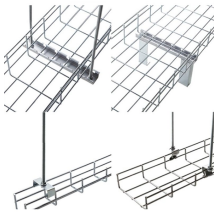
With the right tools and knowledge, you can install an electrical box in a brick wall safely and efficiently. This article will provide step-by-step instructions on how to install an electrical box in a ...



Discover how to install a brick electrical box safely and efficiently with our comprehensive step-by-step guide, covering location selection, material preparation, and wiring connections.



To install an outlet on an exterior brick veneered wall, you can either cut a large hole in your siding or mount a retrofit light box into the wall. The electrical code requires all junctions to be ...



This product is useful for creating hidden charging zones in a brick-walled media wall or office setup where power distribution is needed without bulky wall plates.



Choosing the right electrical box for brick walls involves balancing installation ease, depth, and protection. The following 5 products are selected for their suitability with brick or masonry ...



Shop durable Masonry Boxes for concrete and brick electrical installations. Single-gang, multi-gang, and NEC-compliant options available now.



Recessed electrical box with weatherproof-in-use cover for new brick construction. Non-metallic cover and base. Accepts most single gang wiring devices and uses standard indoor wall plates or a GFCI ...

Contact Us

For more information, pricing, or custom solutions, please contact us:

Website: <https://www.samastersbaseball.co.za>

Email: sales@samastersbaseball.co.za

Phone: +27 63 874 2095

Address: 15 Innovation Drive, Technopark, Stellenbosch, 7600, South Africa

This document is for informational purposes only. Specifications subject to change without notice.

