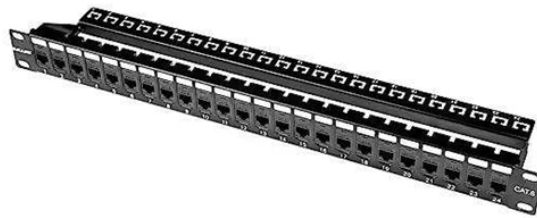


Belgian fiber optic cable drop time



Overview

Calculate round-trip time, propagation delay, and understand network latency components. The BIPT publishes a fibre map showing FTTH roll-out. The BIPT draws the map regarding the status of the FTTH (Fiber To The Home) roll-out based on the data communicated by the operators deploying such an optical fibre network. 48% of Belgian households had an internet connection at home, above the EU average of 93. With fiber, you're ready for 8K video and HD music streaming. Network latency is the time it takes for data to travel from source.



Belgian fiber optic cable drop time



Cette carte est mise à jour régulièrement et son objectif principal est de montrer l'évolution du déploiement du FTTH en Belgique, car le déploiement de ce type ...



What is the TCO Regulation?



This tool calculates theoretical minimum latency based on the speed of light in different transmission mediums (fiber, copper, air) and provides realistic estimates accounting for routing, processing, and ...



While Belgium is catching up with the rest of the EU, the Economy Ministry noted that the 5G rollout has been delayed in recent years "largely due to the late completion of the spectrum auction."



Cette carte est mise à jour régulièrement et son objectif principal est de montrer l'évolution du déploiement du FTTH en Belgique, car le déploiement de ce type de réseau est désormais en cours.



In this article, we will explore the maximum distance limitations for running fiber drop cables, factors affecting distance, and considerations for achieving optimal performance over various ...



Deze kaart wordt op regelmatige tijdstippen bijgewerkt en heeft tot voornaamste doel de evolutie van de uitrol van FTTH in België weer te geven, omdat de uitrol van dit type netwerk nu volop bezig is.



Deze kaart wordt op regelmatige tijdstippen bijgewerkt en heeft tot voornaamste doel de evolutie van de uitrol van FTTH in België weer te geven, omdat de uitrol van ...



This report offers a comprehensive overview of Europe's progress toward full fiber connectivity, with FTTH/B coverage in the EU39 region reaching 74.6% and the take-up rate ...



Coverage maps of the mobile signal strength, measured on behalf of the BIPT, both inside and outside the trains, for the entire Belgian public railway network.



This map is regularly updated and its main purpose is to represent the development of the FTTH roll-out in Belgium, because the roll-out of such type of network is in full swing.



Discover if Belgium's best fiber is available at your location via our map. Check your eligibility and enjoy free installation!

Contact Us

For more information, pricing, or custom solutions, please contact us:

Website: <https://www.samastersbaseball.co.za>

Email: sales@samastersbaseball.co.za

Phone: +27 63 874 2095

Address: 15 Innovation Drive, Technopark, Stellenbosch, 7600, South Africa

This document is for informational purposes only. Specifications subject to change without notice.

