

Barbados Integrated Distribution Box Cabinet 48V



Barbados Integrated Distribution Box Cabinet 48V



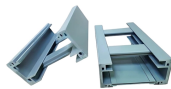
It comes with an integrated controller that enables customer to read tenant-wise energy statistics as well as to extend the remote monitoring access. It is flexible enough to mount in the different cabinets.



WORKING: Rated at 300A, the DC 48V bus bar is perfectly suitable for DC power supply system, widely used in 48V cars, vehicles, RVs, ships, electrical equipment, etc., to meet your various working needs.



It can handle an input voltage of DC 12-24V, with a maximum capacity of 48V and 300 amps. Whether you're powering lights, electronics, or other accessories, this bus bar can handle it all.



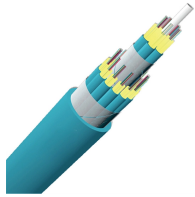
View the TI 12V/48V power distribution box block diagram, product recommendations, reference designs and start designing.



The TPD48202B-N20B6 is a -48V intelligent power distribution cabinet by HUAWEI with a maximum DC capacity of 2000A and the ability to manage up to 72 load branches. It features precise load ...



The DST is a high density Telecom Rackmount DC Distribution Panel designed to accommodate virtually any 48V, 24V or 12V DC power distribution requirement. Its flexibility makes it ideal for all ...



NetSure 2100 Rear View Optional NetSure 48V Battery Cabinet From major switching and data centers to remote shelters and computer rooms, NetSure DC power systems have the features and proven ...



Strong environmental adaptability: The outer shell of the distribution box has a certain level of protection, which is dustproof, waterproof, and anti-corrosive, and ...



The DST is a high density Telecom Rackmount DC Distribution Panel designed to accommodate virtually any 48V, 24V or 12V DC power distribution requirement. ...



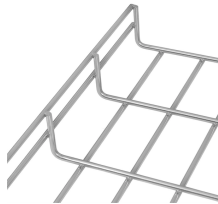
Below is a detailed breakdown of the key materials used in 48V power distribution boxes, their advantages, limitations, and real-world applications to help guide informed selection and ...



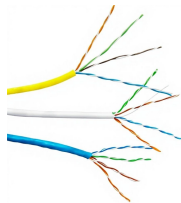
Server Technology -48VDC PDUs control cabinet equipment at remote locations, including colocation facilities and network operation centers — allowing you to reboot locked-up remote servers around ...



To minimize the impact of locked-up routers, servers and other network devices on business-critical networks, many CLECs, ILECs, ISPs and enterprises choose switched negative 48 Volt DC (Neg 48) ...



The DIN Series Power Distribution Unit from ICT is a DIN-rail mount, single-bus DC distribution module designed to be used in 12-, 24- or 48-volt DC applications.



48V (Nominal), 16U IP54 Cabinet. d.c. power system package for small industrial applications that require a compact, efficient, reliable and flexible 48V d.c. power back-up solution.

Contact Us

For more information, pricing, or custom solutions, please contact us:

Website: <https://www.samastersbaseball.co.za>

Email: sales@samastersbaseball.co.za

Phone: +27 63 874 2095

Address: 15 Innovation Drive, Technopark, Stellenbosch, 7600, South Africa

This document is for informational purposes only. Specifications subject to change without notice.

